

HOME

THANK YOU FOR YOUR ORDER

Contents

- 1 **Front Cover**
-
- 2 **Safety Instructions**
-
- 2 **Assembly Instructions**
-
- 3 **Back Cover**

End



Wall Mounted Clothes Rail

Contents

1	Front Cover
-	
2	Safety Instructions
-	
2	Assembly Instructions
-	
3	Back Cover

End

Safety Instructions

Notice: Ensure you read and fully understand instructions before use

While every attempt is made to ensure the highest degree of protection in all equipment, we cannot guarantee freedom from injury. The user assumes all risk of injury due to use. All merchandise is sold on this condition, which no representative of the company can waive or change.

- Make sure all fastenings are tightly in place and that everything is in order before using the product. This should be checked periodically by an adult.
- This product is for indoor use only.
- Never overload the product.
- Assembly should be completed by a responsible adult.
- This product is not a toy, and is only to be used for its designated purpose.
- Clean only with a damp cloth. Do not use strong industrial cleaning substances, as these may damage the product.
- Only use this product on stable, level and dry ground.
- If the product is damaged or has any defects, please contact cservice@oypla.com



The maximum capacity of this product is 25kg. Never exceed this amount.



Never allow children or pets to hang or swing from the rail.



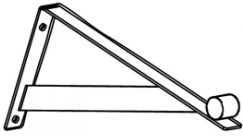



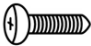
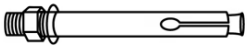
This product contains small parts that could be a choking hazard if swallowed. Keep these items away from children.

Assembly Instructions

Parts List:

If you are missing any of the below parts, please contact cservice@oypla.com

Please be aware that you will be referring to this parts list throughout the assembly process.

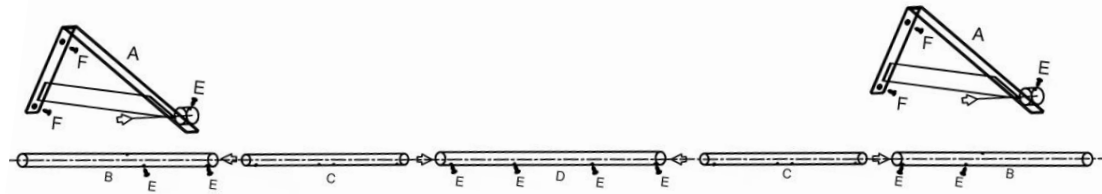
 <p>A 2PCS</p>	 <p>B 2PCS</p>	 <p>C 2PCS</p>
 <p>D 1PCS</p>	 <p>E 10PCS</p>	 <p>F 4PCS</p>

Contents

- 1 Front Cover
-
- 2 Safety Instructions
-
- 2 Assembly Instructions
-
- 3 **Back Cover**

End

Assembly Diagram



HAVE A QUESTION ABOUT YOUR PURCHASE?

Our dedicated customer services team are happy to help.

- Telephone: 020 3600 22 55
- Email: cservice@oypla.com
- Live Chat: www.oypla.com

PLEASE RETAIN A COPY OF THESE INSTRUCTIONS FOR FUTURE CONSULTATION

OYPLA.COM

An Official OYPLA Branded Product