

User Manual

OYPLA™

GARDEN

THANK YOU FOR YOUR ORDER



**UK
CA**






Electric Leaf Blower

CE

USER MANUAL Model No: 4146

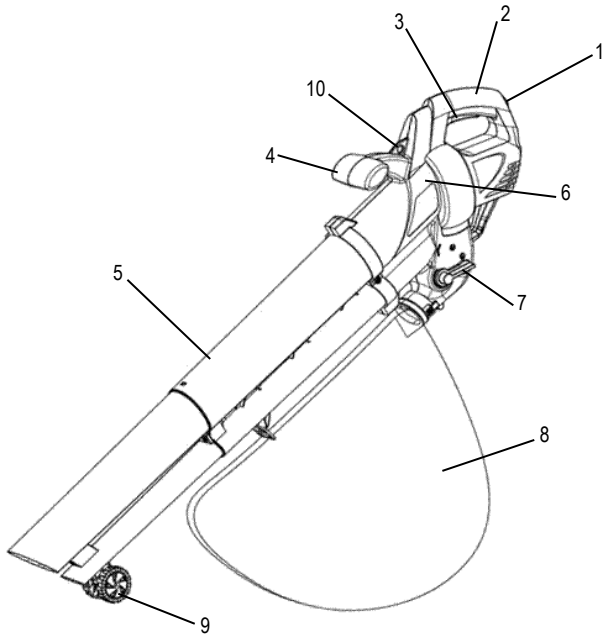
Safety Instructions

Please read the entire instruction manual before using the product and then save it for future reference. We reserve the right for any errors in text or images and any necessary changes made to technical data. In the event of technical problems or other queries, please contact our Customer Services.

- Do not operate power tools in explosive atmospheres, such as in the presence of flammable liquids, gases or dust. Power tools create sparks which may ignite the dust or fumes.
- Keep children and bystanders away while operating a power tool. Distractions can cause you to lose control.  
- The tool should only be connected to a 240V AC, 50Hz electrical outlet.
- Do not abuse the power cord. Never use the cord for carrying, pulling or unplugging the power tool. Keep the cord away from heat, oil and sharp edges or moving parts. Damaged or entangled cords increase the risk of electric shock.
- Do not expose power tools to rain or wet conditions. Water entering a power tool will increase the risk of electric shock. 
- Always wear eye and ear protection. Do not wear loose clothing or jewelry. Keep your hair, clothing and gloves away from moving parts. Loose clothes, jewelry or long hair can be caught in moving parts.  
- Prevent unintentional starting. Ensure the switch is in the off-position before connecting to power source, picking up or carrying the tool.
- Carrying power tools with your finger on the switch or energizing power tools that have the switch on invites accidents.
- Do not overreach. Keep proper footing and balance at all times. This enables better control of the power tool in unexpected situations.
- Store idle power tools out of the reach of children and do not allow persons unfamiliar with the power tool or these instructions to operate the power tool.
- Power tools are dangerous in the hands of untrained users.
- Never blow debris in the direction of bystanders or solid objects. The force of the air can cause objects to be blown or ricochet, which can harm people. Never place objects inside the blower tubes.
- Never operate with any air intakes blocked. Keep air intakes free of dust, lint, hair and anything that may reduce airflow. Do not plug anything into the openings or blower tubes.
- Never use this tool for spreading chemicals, fertilizer or any other substance that may contain toxic materials. Do not use this tool as a sprayer of flammable liquids.
- Disconnect from the electrical supply before opening the inlet cover or installing blower tubes. Never operate this tool without the inlet cover secured or blower tubes in place.
- Always inspect the area before using the tool to remove debris and hard or sharp objects that can be blown or cause damage during operation.
- Always work away from solid objects such as walls, large stones, automobiles and fences.
- Clean spaces with corners by starting in corners and moving outward to straight areas to prevent an accumulation of debris which could fly into the face.
- Do not discard any of the packaging until you have checked that you have all of the parts and fitting required.
- If the product is damaged or has any defects, please contact cservice@oypla.com

Operating Instructions

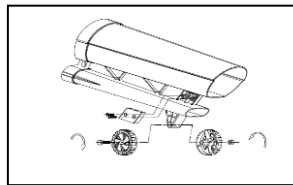
Product Details



- | | |
|----------------------|----------------------|
| 1. Cord Guard | 6. Motor Housing |
| 2. Main Handle | 7. Function Switch |
| 3. On/Off Switch | 8. Collection Bag |
| 4. Additional Handle | 9. Wheel |
| 5. Blower Tube | 10. Shoulder Harness |



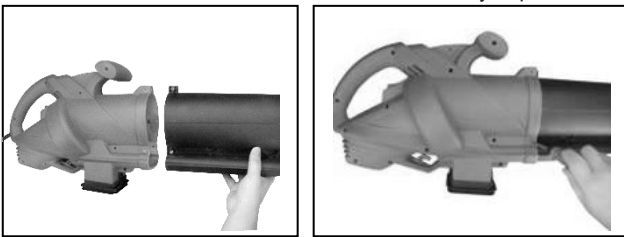
3. Attach the wheels to the lower tube as shown.



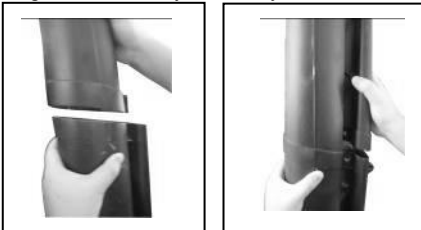
4. Attach the collection bag to the hook on the upper tube and the outlet on the bottom of the motor housing.

Assembly Instructions

1. Slide the upper tube into the motor housing, then tighten the screws and make sure that the tube is fixed firmly in place.



2. Insert the lower tube into the upper tube and push them together until they are firmly connected, then tighten the screws.



Operating Instructions

Before starting the machine, make sure that the collection bag is fitted and the shoulder harness is adjusted to a suitable working position.

Switching On and Off

To switch on, hold the handle and press the switch as shown. To turn off, release the switch.



Operating Instructions

Blowing Mode

- Turn the function switch anti-clockwise to the position of blow mode.

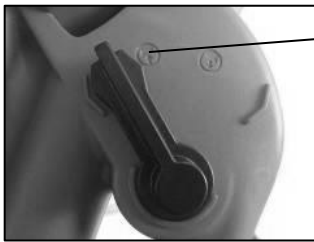


Blowing

- Turn the power switch on and point the jet of air in front of you. Move forward slowly to gather together leaves or to move leaves from inaccessible areas.

Vacuum Mode

- Turn the function switch clockwise to the position of vacuum mode.



Vacuum

- Hold the blower several centimeters over the leaves which you are going to suck up. Switch the machine on.
- Tilt the suction tube slightly and use a sweeping action to collect leaves with approximately 50cm distance between the opening of the suction tube and the ground.
- The leaves will be sucked up into the tube, chopped up and stored in the collection bag.
- When the collection bag is full, the vacuum power will be greatly reduced. When this happens, turn the machine off and disconnect the plug from the power supply.
- Wait until the suction fan has stopped completely before emptying the bag.
- Open the zip fastener inside the bag and empty it completely. If you have collected only leaves and vegetable matter, they will already have been shredded and will be ready for composting.
- Zip up the bag and resume work.

Before re-fitting the collection bag, clean the inside of the exhaust opening, removing any shredded deposits. Pay special attention to the cleaning of the supporting edges of the air flow deviator on the inside of the tube.

Care and Maintenance

- Turn the machine off and unplug from the power supply before servicing, cleaning or maintenance is performed.
- Keep the air intake clean and air vents free of debris to avoid overheating the motor.
- Only clean the outer casing of the machine with a damp cloth and mild detergent; do not use cleaning agents. Water must never come into contact with the machine.
- If the blower vibrates abnormally, stop the motor immediately. Abnormal vibration usually indicates a mechanical problem and continued operation could lead to damage or injury.
- No lubrication is necessary as the motor is equipped with lifetime-lubricated bearings.

Specifications

Rated Voltage: 240V AC, 50Hz

Power: 2600W

No Load Speed: 15000rpm

Blower Velocity: 250km/h

Maximum Blower Air Output: 10.7m³/min

Collection Bag Capacity: 40L

Sound Pressure L_{PA}: 87.4dB(A)

Sound Pressure L_{WA}: 98.07dB(A)

Vibration a_n: 1.66m/s²

Disposal of Unit

Products bearing the symbol shown above means that used electrical and electronic equipment (WEEE) should not be mixed with general household waste. For proper treatment, recovery and recycling, please take this product(s) to designated collection points where it will be accepted free of charge. Disposing of this product correctly will help save valuable resources and prevent any potential negative effects on human health and the environment, which could otherwise arise from inappropriate waste handling. Please contact your local authority for further details of your nearest designated collection point. Penalties may be applicable for incorrect disposal of this waste, in accordance with your national legislation.



HAVE A QUESTION ABOUT YOUR PURCHASE?

Our dedicated customer services team are happy to help.

- **Telephone:** 020 3600 22 55
- **Email:** cservice@oypla.com
- **Live Chat:** www.oypla.com

PLEASE RETAIN A COPY OF THESE INSTRUCTIONS FOR FUTURE CONSULTATION

OYPLA.COM

An Official OYPLA Branded Product