

OYPOLEATM

LEISURE

PLEASE READ THIS USER'S MANUAL THOROUGHLY BEFORE USE

USER MANUAL

BALLOON PUMP

MODEL NO.: 4002



SAFETY INSTRUCTIONS (Please keep these instructions)

Please read the entire instruction manual before using the product and then save it for future reference. We reserve the right for any errors in text or images and any necessary changes made to technical data. In the event of technical problems or other queries, please contact our Customer Services.

- The product should only be connected to a 230 V AC, 50 Hz electrical outlet.
- Never leave the product unattended whilst it is switched on.
- If you have to leave the product unattended, even for a short while, always switch it off.
- Keep the product out of children's reach and do not allow children to use it.
- Inspect the mains lead regularly. Never use the product if the mains lead or plug has been damaged in any way.
- Do not place the mains lead on or near any hot surface.
- Never move the product by pulling on the lead.
- Do not store or use the pump in wet conditions.
- Keep the inflation port free from blockage and keep them ventilated at all times.
- Never allow sand, stones, etc. to be sucked into the inflation port when using the pump.
- Never look inside or point the inflation port towards your eyes when the pump is working.
- Never allow sand, stones, etc. to be sucked into the inflation port when using the pump.
- Never attempt to put hands or fingers into the inflation port at any time.
- Do not use the pump continuously for more than 2 hours, otherwise the pump may overheat.

⚡ WARNING ⚡

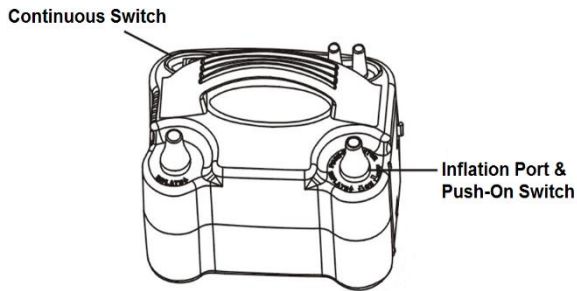
To Reduce The Risk of Fire or Electric Shock, follow these basic precautions:

- Read all instructions before using the balloon pump.
- Never allow children to operate or play with the balloon pump.
- Never leave pump unattended when not in use.

-Save these instructions-

USER INSTRUCTIONS (Please keep these instructions)

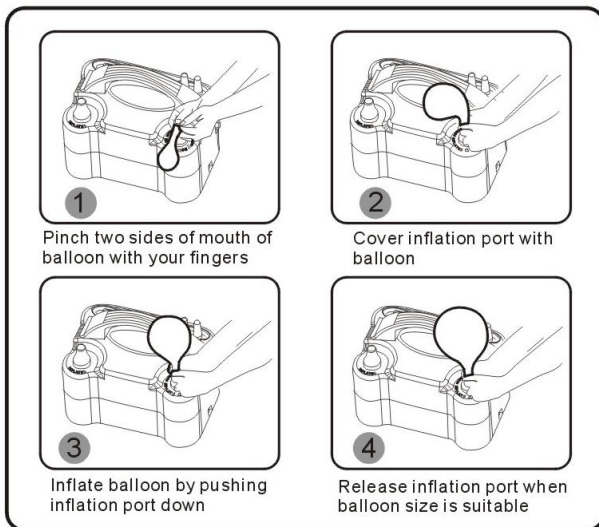
Product Details



Operating Instructions

Pinch the edge of the balloon with your fingers and cover the inflation port with the balloon. Press the inflation port down to inflate the balloon and release the inflation port to stop.

For inflating balloons continuously, turn the continuous switch on (-) then cover the inflation port with the balloon to inflate. To stop inflation, turn the switch off (O).



Disposal of Unit

Appliances bearing the symbol shown here may not be disposed of in domestic rubbish. You are required to dispose of old electrical and electronic appliances like this separately. Please visit www.recycle-more.co.uk or www.recyclenow.co.uk for access to information about the recycling of electrical items. Please visit www.weeeireland.ie for access to information about the recycling of electrical items purchased in Ireland. The WEEE directive, introduced in August 2006, states that all electrical items must be recycled, rather than taken to landfill, please arrange to take this appliance to your local Civic Amenity site for recycling, once it has reached the end of its life.



An Official Oypla Branded Product



Imported into the EU by Oypla.com LLP, Uxbridge, UB8 2FX