

Out of this world savings.

User Manual

Model: **3933**



72L Lawn Roller

Contents

Safety Information	2
What's In The Box?	3
Assembly Instructions	4

Safety Information

Please ensure you read and fully understand instructions before use

While every attempt is made to ensure the highest degree of protection in all equipment, we cannot guarantee freedom from injury. The user assumes all risk of injury due to use. All merchandise is sold on this condition, which no representative of the company can waive or change.

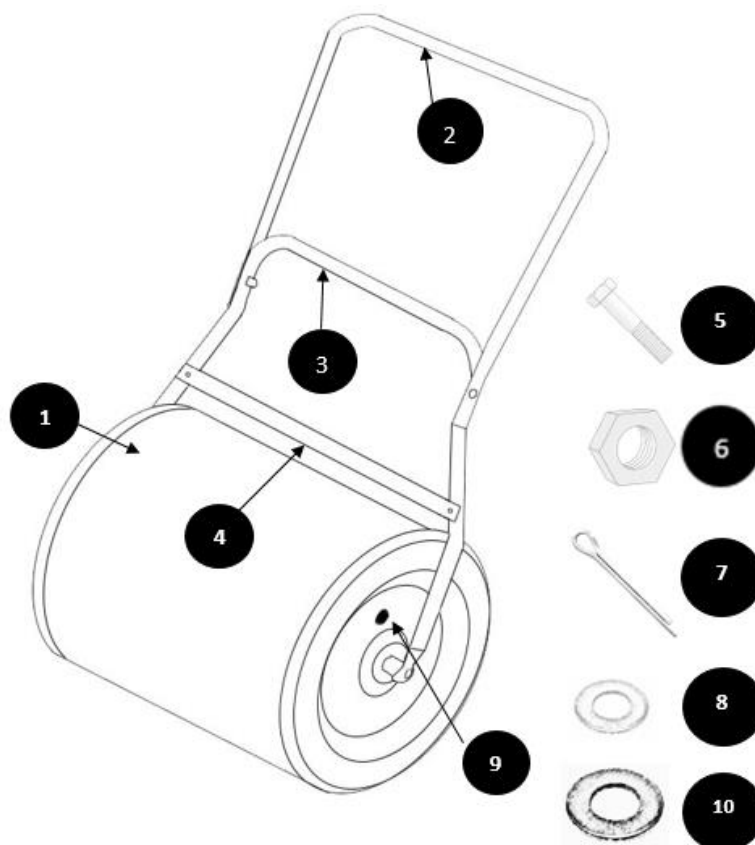
- Before using the lawn roller, make sure all fastenings are tightly in place and that everything is in order, and checked periodically.
 - This lawn roller is not a toy, and is only to be used for its designated purpose.
 - This product is not suitable for use by children.
 - If at any time during activity you feel faint, dizzy or experience pain, stop and consult your physician or doctor.
 - This product is intended for outdoor use only.
 - This product includes small parts that could cause choking. Keep pets and children away when assembling the roller.
 - **Weight when filled with sand: 120kg**
 - Clean only with a damp cloth. Do not use strong industrial cleaning substances.
 - Leaving the lawn roller outside exposed to weather, especially direct sun, rain and salt air, will speed with weathering process. This can be slowed by removing the roller from these conditions, or covering it with a suitable cover.
 - When using the lawn roller, it is essential that you keep your hands and feet clear of the heavy drum.
 - Special care is necessary when using the lawn roller on a slope.
 - If the product is damaged or has any defects, please contact cservice@oypla.com
 - **Weight when filled with water: 72kg**
-

What's In The Box?

Please note that you will be referring to the below parts list during assembly

If any of the below parts are missing or damaged, please contact our dedicated team at cservice@oypla.com.

No.	Part Name	Quantity
1	Drum	1
2	Handle (with sponge)	1
3	Bottom Section	1
4	Scraper	1
5	M6 Bolt	4
6	Nut	4
7	Split Pin	2
8	Washer	2
9	Cork/Plug	1
10	Large Washer	1



ASSEMBLY INSTRUCTIONS BEGIN ON NEXT PAGE

Assembly Instructions

Please refer to the below information to help assemble your Oypla product

If you require assistance with the assembly of your Oypla product, please contact our dedicated team at cservice@oypla.com.

Step 1:

- Assemble the bottom section (3) to the Handle (with sponge) (2) with one M6 bolt (5) and one nut (6) on each side.
- Attach the bottom section to the drum axle, using a washer (8) and split pin (7) on either side to secure drum to bottom section. **Force may be needed to secure.**

Step 2:

- Attach the scraper (4) to the bottom section using the remaining two M6 bolts (5) and nuts (6).

Step 3:

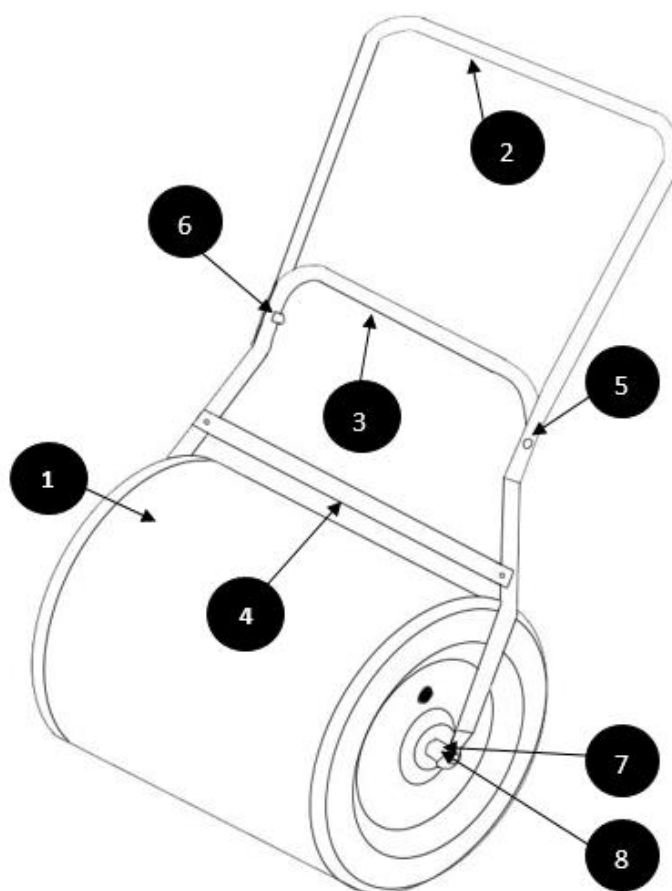
- Check the handle is square and the scraper is not touching the roller drum and then tighten all the fixings.

Step 4:

- Turn the roller drum so that the cap is upwards and then fill with water or sand for a heavier roller use sand.

Step 5:

- Lastly, seal the drum with the large washer (10) and the cork/plug (9).



Have a Question About Your Purchase?

Our dedicated customer services team are happy to help. Contact them via:

Telephone: 020 3600 22 55
Email: cservice@oypla.com
Live Chat: www.oypla.com

Consider the Environment!

By recycling the cardboard box in which this product was packed, you contribute towards helping the environment. If you see a recycling logo such as the below on the packaging, it can be recycled. If a recycling logo is not present, please check with your local authority before recycling.



PLEASE RETAIN A COPY OF THESE INSTRUCTIONS FOR FUTURE CONSULTATION

An Official Oypla Branded Product
Imported by Oypla.com LLP, Uxbridge, UB8 2FX