



## 8.5L Digital Steel Safe



# Safety Instructions

**Notice: Ensure you read and fully understand instructions before use**

**While every attempt is made to ensure the highest degree of protection in all equipment, we cannot guarantee freedom from injury. The user assumes all risk of injury due to use. All merchandise is sold on this condition, which no representative of the company can waive or change.**

- This product is not a toy, and is only to be used for its designated purpose.
- DO NOT close the safe door unless the keys have been removed and batteries are in the keypad panel.
- This product is intended for indoor use only.
- Do not carry out alterations or modifications to this product.
- This product contains small parts that could be a choking hazard if swallowed. Keep these items away from children.
- Do not discard any of the packaging until you have checked that you have all the parts and fittings required.
- Never lock your spare override keys or the instruction manual in the safe. Once the batteries have depleted, you will need to use the keys to open the safe. Spare keys are not available.
- Clean only with a damp cloth. Do not use strong industrial cleaning substances or abrasive materials as these will damage the product.
- If the product is damaged or has any defects, please contact [cservice@oypla.com](mailto:cservice@oypla.com)



**An Official Oypla Branded Product**

**Please retain a copy of all instructions for future consultation.**

# Operating Instructions

## Parts List:

If you are missing any of the below parts please contact [cservice@oypla.com](mailto:cservice@oypla.com)

Please be aware that you will be referring to this parts list throughout the assembly process.

8.5L Digital Safe



1pcs

Set of Keys



2pcs

Rawl Bolt



4pcs

Washer

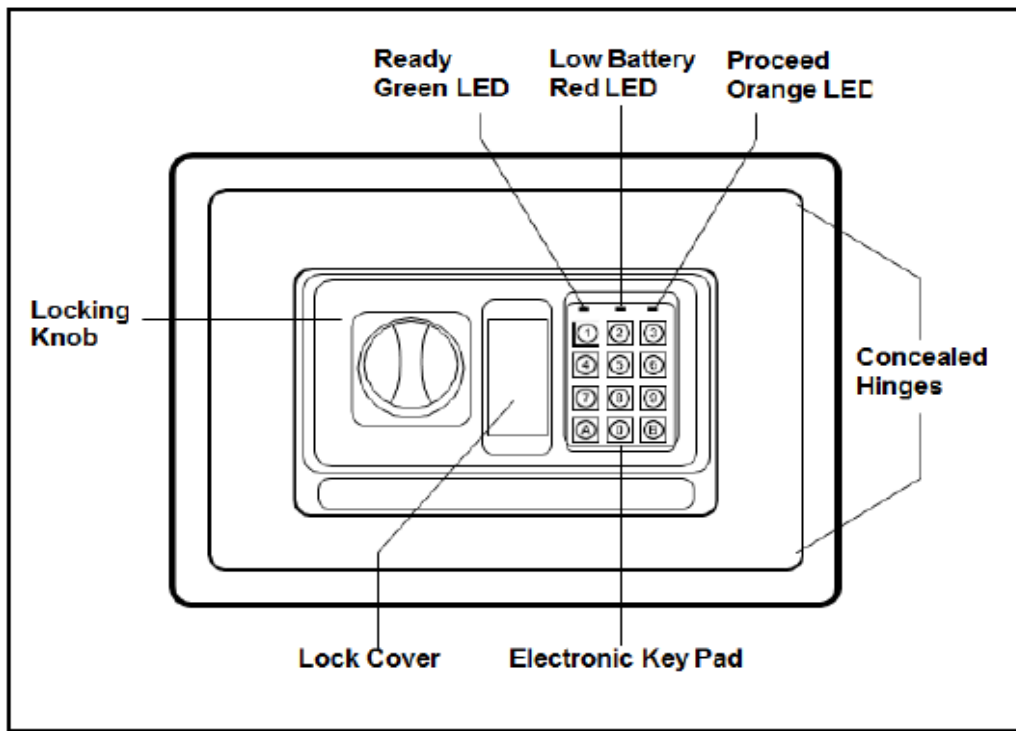


4pcs

Nut



4pcs

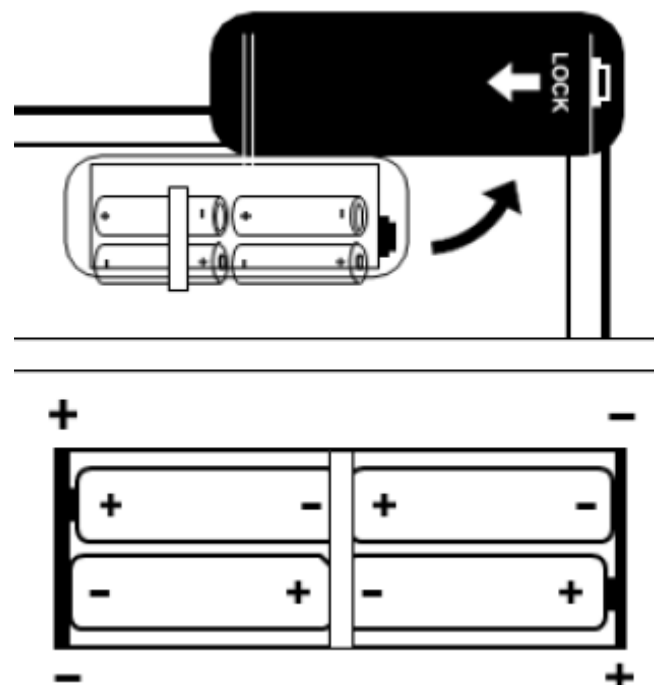


### Operating for the first time:

- Remove the plastic lock cover.
- Insert the override key, turn it anti-clockwise and at the same time turn the locking knob clockwise and pull open the safe.
- Remove the battery cover on the rear of the door by pushing the catch and pulling out the cover.
- Keep the door open until you have set the PIN code.

### Inserting/Replacing Batteries:

- Remove the battery cover on the rear of the door by pushing the catch in and pulling out the cover.
- Install the four AA batteries, ensuring they are in correctly. Put the cover back on.
- Keep the door open until you have set the PIN code.



The battery life is approximately one year.

If the batteries are removed from the safe, the set PIN code will only remain in its memory for approximately four hours. After this the PIN code will need resetting.

## Programming your PIN:

Each time a button is pressed, a beep will be heard and the orange LED will flash. This is a safety feature so you will know when the safe is being accessed and cannot be switched off.

Keep PIN codes in a safe place. Do not use personal information like birthdays, telephone numbers etc.

- Write down your PIN code so you do not forget it. (Any combination of numbers from three to eight digits).
- Press the red reset button located on the back of the door.
- A beep will be heard and the orange LED will light. This means you have twenty seconds to enter your PIN.
- After entering your new PIN, press the “A” or “B” button once.
- A beep will be heard and the orange LED will go out.
- Your PIN has now been set.
- Screw the security cap back onto the red reset button. Be sure to do this to avoid people tampering with the safe.

## Securing your safe:

NOTE: We strongly recommend securing your safe to a wall or floor for security reasons.

- To secure the safe to the desired surface, start by using the holes in the safe to mark out where you need to drill.
- Loosely attach the rawl bolt onto the safe with the nuts and washers provided.
- Hold the safe over the drilled holes and insert the rawl bolts into the holes (as seen in the image to the right).
- Tighten the nuts from the inside of the safe to secure it firmly into place.

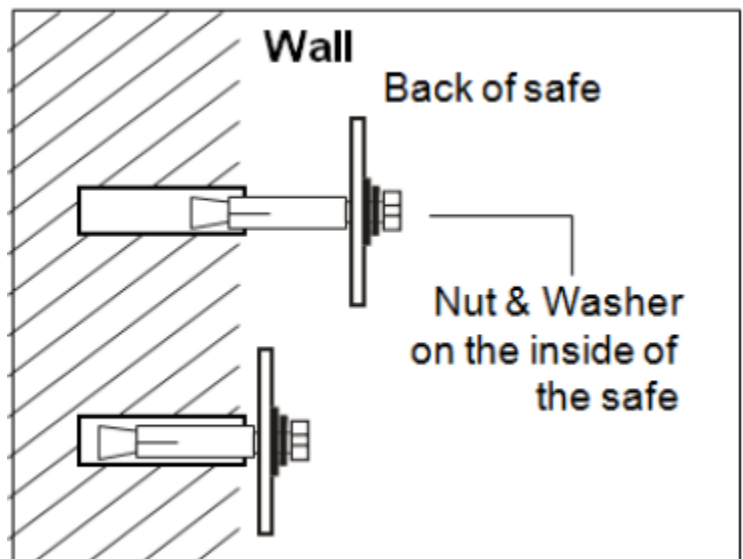
## Opening the door using your PIN number:

Each time a button is pressed, a beep will be heard and the orange LED will flash.

- Enter your PIN number.
- Press the “A” or “B” button.
- A beep will be heard and the orange LED will flash.
- The green LED will light to indicate that the safe door can be opened.
- You now have five seconds to open the door before it will lock again.
- Open the safe door by turning the knob clockwise and pulling it open.

If the red and green LED lights flash when the correct PIN is entered, then the batteries **MUST** be replaced immediately before closing the door as this indicates that the batteries are too low.

If you enter an incorrect PIN, three warning beeps will be heard. Entering an incorrect PIN three times will freeze the locking mechanism and keypad for twenty seconds. If you enter the PIN incorrectly another three times, the same will happen but for five minutes.



	PROBLEM	CAUSE	SOLUTION
1	Can I get a replacement key/ extra key?		Replacement keys are not available as the keys are unique to each safe.
2	The keypad becomes inoperable.	Low or fully depleted batteries.	Use the override keys and replace the batteries.
3	My PIN works and the green light lights, however, the safe won't open.	The batteries are low. The keypad will operate but the lock relay won't.	Use the override keys and replace the batteries.
4	I have lost the keys and forgotten the PIN number, can I get some spare keys?		If the safe cannot be opened properly then you will need to forcibly open it
5	I am experiencing problems using the backup key; it is unable to slide smoothly into the keyhole.		Spray inside the keyhole with WD40, leave for a few minutes and then try again.
6	We recently changed the batteries in the safe, the safe has reset the code itself, and the code I've been using is no longer valid?	If the batteries are completely depleted for more than four hours, the safe will not retain the code.	Try the factory default code (159) or use the override key; then refer to the user manual to reset your original code or to enter a new code.
7	The Red and Green LED lights simultaneously when the correct PIN is entered.	The batteries are depleted.	Immediately replace the batteries.
8	The batteries I bought don't fit the safe?	Batteries can vary in size.	Try another brand of batteries.
9	When I use the override key, I can't open the door.		Ensure that you are turning the key anti-clockwise, holding it in that position and then turn the locking knob clockwise to release the catch.



#### Correct Disposal of this product

This marking indicates that this product should not be disposed with other household waste throughout the EU. To prevent possible harm to the environment or human health from uncontrolled waste disposal, recycle it responsibly to promote the sustainable reuse of material resources. To return your used device, please use the return and collection systems or contact the retailer where the product was purchased. They can take this product for environmental safe recycling.



Imported into the EU by Oypla.com LLP, Uxbridge, UB8 2FX