

OYPLATM HOME



Drinks Tower Dispenser

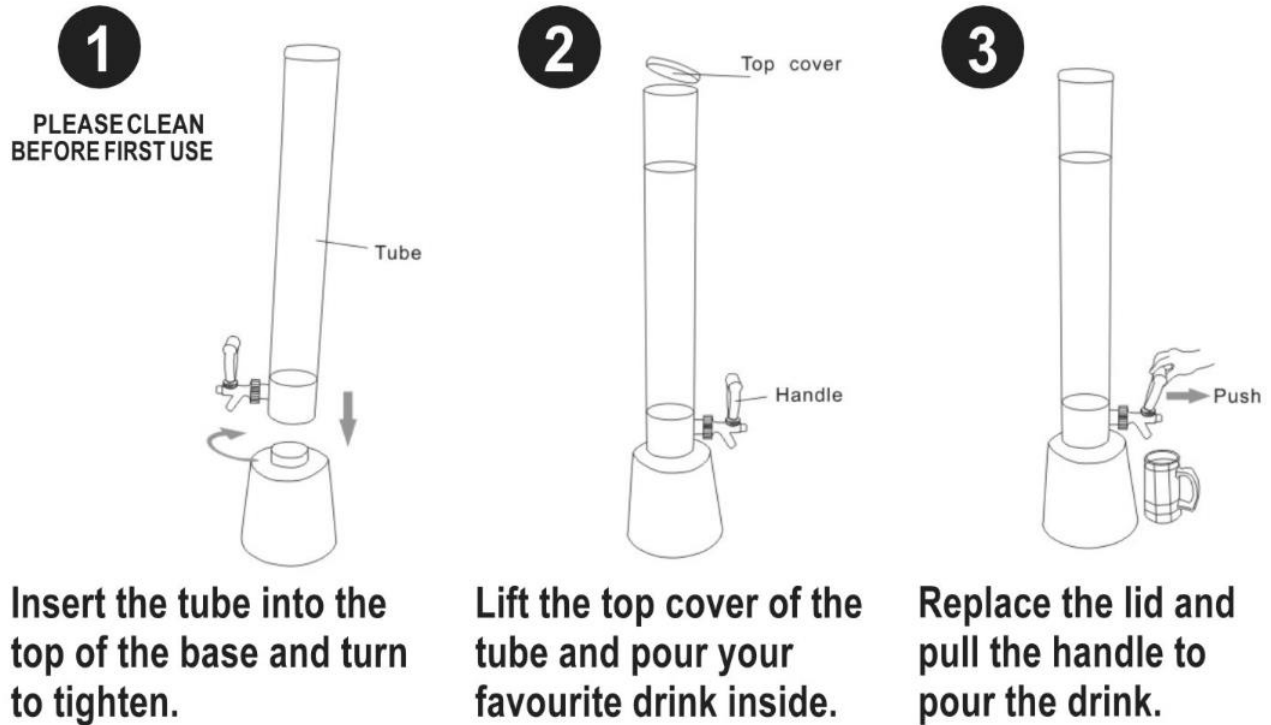
Safety Instructions

Notice: Ensure you read and fully understand instructions before use

While every attempt is made to ensure the highest degree of protection in all equipment, we cannot guarantee freedom from injury. The user assumes all risk of injury due to use. All merchandise is sold on this condition, which no representative of the company can waive or change.

- This product should only be used for its designated purpose.
- Do not carry out alterations or modifications to this product.
- This product is intended for indoor use only.
- Do not use strong industrial cleaning substances or abrasive materials as these will damage the product.
- Before using the product, make sure all parts are tightly in place and that everything is in order, and checked periodically by an adult.
- If the product is damaged or has any defects, please contact cservice@oypla.com

Operating Instructions



CLEANING YOUR DRINK DISPENSER

Wash with warm water only. The drink dispenser is **NOT** dishwasher safe.

- 1** Fill the tube with warm, soapy water and pull the handle to drain out.
- 2** Repeat several times to thoroughly clear the water from the tube.
- 3** Place the dispenser on a secure surface or drying rack until completely dry.

**ALWAYS DRINK
RESPONSIBLY
NEVER DRINK AND DRIVE!**

HAVE A QUESTION ABOUT YOUR PURCHASE?

OUR DEDICATED CUSTOMER SERVICES TEAM ARE HAPPY TO HELP
CONTACT THEM VIA:

TELEPHONE: 020 3600 2255

EMAIL: cservice@oypla.com

LIVE CHAT: www.oypla.com

PLEASE RETAIN A COPY OF THESE INSTRUCTIONS FOR FUTURE CONSULTATION

OYPLA.COM

An Official OYPLA Branded Product

Imported by Oypla.com LLP, Uxbridge, UB8 2FX

USER MANUAL Model No: 3701