



Out of this world savings.

User Manual

Models: **3853, 3680, 3681, 3682**



*Size will vary depending on model purchased

Electric Oil Radiator

CE

**UK
CA**


Contents

Safety Information	2
What's In The Box?	3
Assembly Instructions	4
Operating Instructions	5
Cleaning & Storage	6
Technical Data	7

Safety Information

Please ensure you read and fully understand instructions before use

While every attempt is made to ensure the highest degree of protection in all equipment, we cannot guarantee freedom from injury. The user assumes all risk of injury due to use. All merchandise is sold on this condition, which no representative of the company can waive or change.

- This appliance can be used by children aged from 8 years and above and persons with reduced physical, sensory or mental capabilities or lack of experience and knowledge if they have been given supervision or instruction concerning use of the appliance in a safe way and understand the hazards involved. Children shall not play with the appliance. Cleaning and user maintenance shall not be made by children without supervision.
 - If the supply cord is damaged, it must be replaced by the manufacturer, its service agent or similarly qualified persons in order to avoid a hazard.
 - **Warning: In order to avoid overheating, do not cover the heater. The meaning of figure marking is "DO NOT COVER".** 
 - The heater must not be located immediately below a socket-outlet.
 - Children of less than 3 years should be kept away unless supervised. Children aged from 3 years and less than 8 years shall only switch on/off the appliance provided that it has been placed or installed in its intended normal operating position and they have been given supervision or instruction concerning use of the appliance in a safe way and understand the hazards involved. Children aged from 3 years and less than 8 years shall not plug in, regulate and clean the appliance or perform user maintenance.
 - Do not use this heater in the immediate surroundings of a bath, a shower or a swimming pool.
 - The heater will become hot when in use. To avoid burns, don't let bare skin touch hot surface.
 - This appliance only for household use.
-

-
- **WARNING: Do not use this heater in small rooms when they are occupied by persons not capable of leaving the room on their own, unless constant supervision is provided.**
 - Disconnect from mains when not in use, moving or cleaning.
 - This heater is filled with a precise quantity of special oil. Repairs requiring opening of the oil container are only to be made by the manufacturer or his service agent who should be contacted if there is an oil leakage. Regulations concerning the disposal of oil when scrapping the appliance have to be followed.
 - **CAUTION: If using an extension lead please ensure you do not exceed the maximum rated running wattage/load of the extension lead.**
 - **CAUTION: Some parts of this product can become very hot and cause burns. Particular attention has to be given where children and vulnerable people are present.**
 - **WARNING: To reduce the risk of fire, keep textiles, curtains, or any other flammable material a minimum distance of 1 m from the air outlet.**
 - Do not use this heater if it has been dropped.
 - Do not use if there are visible signs of damage to the heater.
 - Use this heater on a horizontal and stable surface.
 - Do not leave this product unsupervised for extended periods of time, for example overnight use.
 - Do not attempt to repair, disassemble or modify the appliance. There are no user-serviceable parts inside.
 - If the product is damaged or has any defects, please contact cservice@oypla.com.
-

What's In The Box?

Please note that you will be referring to the below parts list during assembly

If any of the below parts are missing or damaged, please contact our dedicated team at cservice@oypla.com.

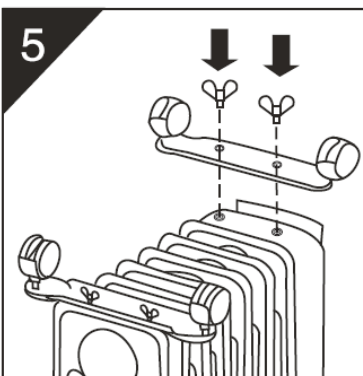
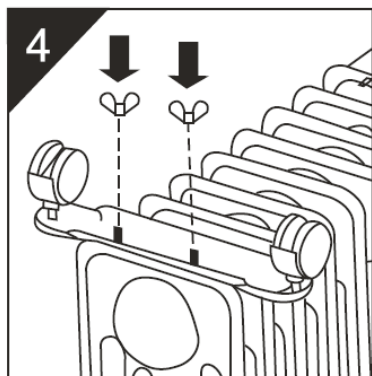
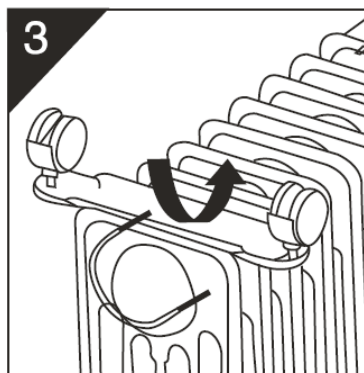
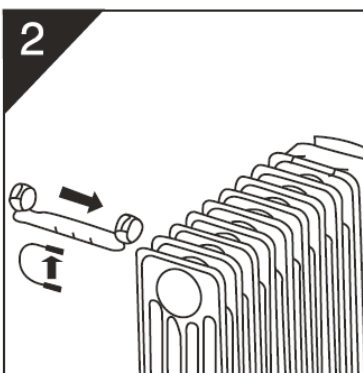
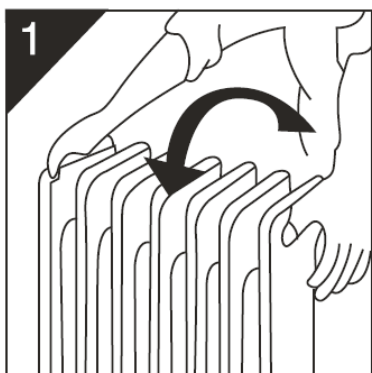
Part	Quantity	
Heater Body	1	
Foot with Wheels	2	
Wingnut	4	
	5-Fin/7-Fin Models	9-Fin/11-Fin Models
U-Bar	1	2

Assembly Instructions

Please refer to the below information to help assemble your Oypla product

If you require assistance with the assembly of your Oypla product, please contact our dedicated team at cservice@oypla.com.

1. Turn the heater upside down.
2. Position the U-Bar between the most outward fins.
3. Position the Foot so that the two holes are over the ends of the U-Bar.
4. Tighten the wingnuts in place to secure the Foot.
5. For 9-fin and 11-fin models, follow the same procedure for the remaining foot and wingnuts. For 5-fin and 7-fin models, you will find holes on the bottom of the base which correspond with the other foot. Secure the other foot into place with the two black coated wingnuts provided.



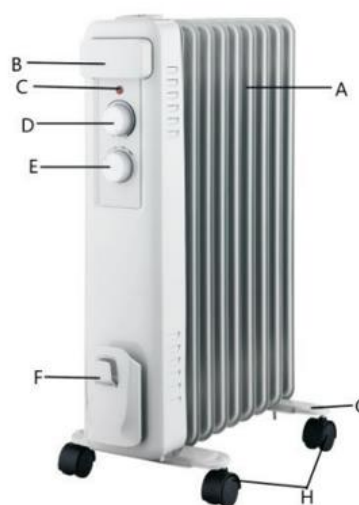
Operating Instructions

The below information is designed to help you with the operation of your Oypla product

If the product is damaged, defective or you require more information, please contact our dedicated team at cservice@oypla.com.

- Before turning on, ensure the heater is plugged into the socket, the power is switched to "0" and the thermostat is at the minimum setting.
- Turn the power switch to the single dot for the minimal output, two dots for the medium output, and three dots for maximum output.
- Turn the thermostat knob clockwise to the maximum position.
- Once the room temperature is at a comfortable level, slowly turn the thermostat anti-clockwise until the indicator light goes out. The heater will then attempt to keep the room temperature at the desired level.
- Do not cover the heater at any time during operation. There is a risk of fire if the heater is covered.
- Once you have finished using the heater, ensure that you turn the power switches off, and the thermostat control switch to "0" positions. Then, unplug from the mains supply.

- A.** Oil-Filled Fins
- B.** Moving Handle
- C.** Indication Light
- D.** Temperature Control
- E.** Power Switch
- F.** Cord Storage
- G.** Wheel Base
- H.** Wheels



- Only operate the heater in the normal upright position with the wheels attached to the bottom. Any other position could create a hazardous situation. If you are concerned when it comes to installing the product, please consult an electrician.

Cleaning & Storage

Please familiarise yourself with the below information before cleaning your Oypla product

Oypla.com are not responsible for any product damage as a result of incorrectly cleaning and/or maintaining the product.

Cleaning your Heater

1. Always disconnect the heater from the power supply before beginning to clean.
2. Clean the outside of the heater by wiping with a damp cloth and buff with a dry cloth.
3. DO NOT attempt to use any waxes or polishes as these may cause discoloration.

Storing your Heater

1. Save the box for the off-season storage,
 2. Clean the heater following the cleaning instructions on the previous page.
 3. Remove the wheel base assemblies.
 4. Place the heater and the wheel parts back into the original box and store in a cool and dry place.
 5. If you wish to store the heater fully assembled, be sure to cover it to protect it from dust.
-

Technical Data

Contact details	Oypla.com LLP, Uxbridge, UB8 2FX – 020 3600 22 55 – cservice@oypla.com				
Model identifier(s): 3682					
Item	Symbol	Value	Unit	Item	Unit
Heat output				Type of heat output/room temperature control (select one)	
Nominal heat output	P _{nom}	2.500	kW	single stage heat output and no room temperature control	No
Minimum heat output (indicative)	P _{min}	1.000	kW	two or more manual stages, no room temperature control	No
Maximum continuous heat output	P _{max,c}	2.500	kW	with mechanic thermostat room temperature control	Yes
Power consumption				with electronic room temperature control	No
In off mode	P _o	0.00	W	electronic room temperature control plus day timer	No
In standby mode	P _{sm}	N/A	W	electronic room temperature control plus week timer	No
In idle mode	P _{idle}	0.00	W	Other control options (multiple selections possible)	
In network standby	P _{nsm}	N/A	W	room temperature control, with presence detection	No
Standby mode with display information or status			No	room temperature control, with open window detection	No
Seasonal space heating energy efficiency in active mode	η _{S,on}	85.0	%	distance control option	No
				adaptive start control	No
				working time limitation	No
				black bulb sensor	No
				self-learning functionality	No
				control accuracy	No

Have a Question About Your Purchase?

Our dedicated customer services team are happy to help. Contact them via:

Telephone: 020 3600 22 55

Email: cservice@oypla.com

Live Chat: www.oypla.com

Consider the Environment!

By recycling the cardboard box in which this product was packed, you contribute towards helping the environment. If you see a recycling logo such as the below on the packaging, it can be recycled. If a recycling logo is not present, please check with your local authority before recycling.



Environmental Protection

Products bearing the symbol shown below means that used electrical and electronic equipment (WEEE) should not be mixed with general household waste. For proper treatment, recovery and recycling, please take this product(s) to designated collection points where it will be accepted free of charge. Disposing of this product correctly will help save valuable resources and prevent any potential negative effects on human health and the environment, which could otherwise arise from inappropriate waste handling. Please contact your local authority for further details of your nearest designated collection point. Penalties may be applicable for incorrect disposal of this waste, in accordance with your national legislation.



PLEASE RETAIN A COPY OF THESE INSTRUCTIONS FOR FUTURE CONSULTATION

An Official Oypla Branded Product

Imported by Oypla.com LLP, Uxbridge, UB8 2FX

User Manual

Model Code: 3853, 3680, 3681, 3682

Oypla.com LLP / cservice@oypla.com