

# OYPLA™

# HOME

THANK YOU FOR YOUR ORDER

User Manual

Model Code: 3680, 3681,  
3682, 3853

- 1 Front Cover
- 
- 2 Safety/Warning  
Instructions
- 
- 4 Assembly  
Instructions
- 
- 5 Operating  
Instructions
- 
- 6 Cleaning
- 
- 6 Storage
- 
- 7 Technical  
Specification
- 
- 8 Back Cover

End

OYPLA



## Oil Radiator

Model Code: 3680, 3681, 3682, 3853

Oypla.com LLP / [www.oypla.com](http://www.oypla.com)

# Safety Instructions

**Notice: Ensure you read and fully understand instructions before use**

While every attempt is made to ensure the highest degree of protection in all equipment, we cannot guarantee freedom from injury. The user assumes all risk of injury due to use. All merchandise is sold on this condition, which no representative of the company can waive or change.

- This appliance can be used by children aged from 8 years and above and persons with reduced physical, sensory or mental capabilities or lack of experience and knowledge if they have been given supervision or instruction concerning use of the appliance in a safe way and understand the hazards involved. Children shall not play with the appliance. Cleaning and user maintenance shall not be made by children without supervision.
- Children of less than 3 years should be kept away unless supervised. Children aged from 3 years and less than 8 years shall only switch on/off the appliance provided that it has been placed or installed in its intended normal operating position and they have been given supervision or instruction concerning use of the appliance in a safe way and understand the hazards involved. Children aged from 3 years and less than 8 years shall not plug in, regulate and clean the appliance or perform user maintenance.

1 Front Cover

-

2 **Safety/Warning  
Instructions**

-

4 Assembly  
Instructions

-

5 Operating  
Instructions

-

6 Cleaning

-

6 Storage

-

7 Technical  
Specification

-

8 Back Cover


End

Model Code: 3680, 3681, 3682, 3853

Oypla.com LLP / [www.oypla.com](http://www.oypla.com)

1	Front Cover
-	
2	Safety/Warning Instructions
-	
4	Assembly Instructions
-	
5	Operating Instructions
-	
6	Cleaning
-	
6	Storage
-	
7	Technical Specification
-	
8	Back Cover

End

- If the supply cord is damaged, it must be replaced by the manufacturer, its service agent or similarly qualified persons in order to avoid a hazard.
- Warning: In order to avoid overheating, do not cover the heater. The meaning of figure  marking is “DO NOT COVER”.
- The heater must not be located immediately below a socket-outlet.
- Do not use this heater in the immediate surroundings of a bath, a shower or a swimming pool.
- The heater is hot when in use. To avoid burns, don't let bare skin touch hot surface.
- This appliance only for household use.
- **WARNING:** Do not use this heater in small rooms when they are occupied by persons not capable of leaving the room on their own, unless constant supervision is provided.
- **CAUTION** - Some parts of this product can become very hot and cause burns. Particular attention has to be given where children and vulnerable people are present.
- Disconnect from mains when not in use, moving or cleaning.

Model Code: 3680, 3681, 3682, 3853

Oypla.com LLP / [www.oypla.com](http://www.oypla.com)

1 Front Cover

-

2 Safety/Warning  
Instructions

-

4 Assembly  
Instructions

-

5 Operating  
Instructions

-

6 Cleaning

-

6 Storage

-

7 Technical  
Specification

-

8 Back Cover

End

- **WARNING:** To reduce the risk of fire, keep textiles, curtains, or any other flammable material a minimum distance of 1 m from the air outlet.
- This heater is filled with a precise quantity of special oil. Repairs requiring opening of the oil container are only to be made by the manufacturer or his service agent who should be contacted if there is an oil leakage. Regulations concerning the disposal of oil when scrapping the appliance have to be followed.
- Do not use this heater if it has been dropped.
- Do not use if there are visible signs of damage to the heater.
- Use this heater on a horizontal and stable surface.
- Do not leave this product unsupervised for extended periods of time, for example overnight use.
- Do not attempt to repair, disassemble or modify the appliance. There are no user-serviceable parts inside.
- **CAUTION** – If using an extension lead please ensure you do not exceed the maximum rated running wattage/load of the extension lead.
- If the product is damaged or has any defects, please contact [cservice@oypla.com](mailto:cservice@oypla.com).

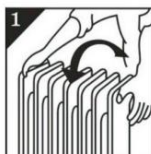
Model Code: 3680, 3681, 3682, 3853

Oypla.com LLP / [www.oypla.com](http://www.oypla.com)

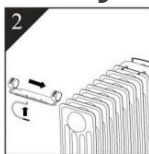
# Assembly Instructions

1	Front Cover
-	
2	Safety/Warning
	Instructions
-	
4	Assembly
	Instructions
-	
5	Operating
	Instructions
-	
6	Cleaning
-	
6	Storage
-	
7	Technical
	Specification
-	
8	Back Cover

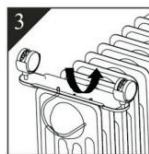
End



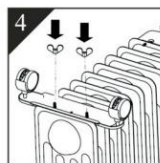
1. Turn the heater upside down.



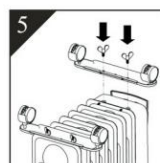
2. Position the wheel base between the outmost fins on each side of the radiator.



3. Attach the wheel bases to the heater using the U-bolts and wing nuts supplier.



4. Tighten the wing nuts.



5. Fix the front wheel base at the bottom of the front panel by two screws

→ Fig 5 only for 7fins

# Operating Instructions

- Before turning on, ensure the heater is plugged into the socket, the power is switched to "0" and the thermostat is at the minimum setting.
- Turn the power switch to the single dot for the minimal output, two dots for the medium output, and three dots for maximum output.
- Turn the thermostat knob clockwise to the maximum position.
- Once the room temperature is at a comfortable level, slowly turn the thermostat anti-clockwise until the indicator light goes out. The heater will then attempt to keep the room temperature at the desired level.
- Do not cover the heater at any time during operation. There is a risk of fire if the heater is covered.
- Once you have finished using the heater, ensure that you turn the power switches off, and the thermostat control switch to "0" positions. Then, unplug from the mains supply.

Model Code: 3680, 3681, 3682, 3853

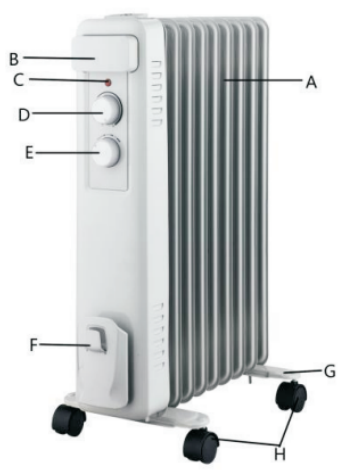
Oypla.com LLP / www.oypla.com

1	Front Cover
	-
2	Safety/Warning
	Instructions
	-
4	Assembly
	Instructions
	-
5	Operating
	Instructions
	-
6	Cleaning
	-
6	Storage
	-
7	Technical
	Specification
	-
8	Back Cover

End

## WARNING:

Only operate the radiator in the normal upright position with the wheels attached to the bottom. Any other position could create a hazardous situation. If you are concerned when it comes to installing the product, please consult a qualified electrician.



### Parts:

- |                        |                 |
|------------------------|-----------------|
| A. Oil filled fins     | E. Power switch |
| B. Moving handle       | F. Cord storage |
| C. Indication light    | G. Wheel base   |
| D. Temperature control | H. Wheels       |

### Cleaning your Heater

1. Always disconnect the heater from the power supply before beginning to clean.
2. Clean the outside of the heater by wiping with a damp cloth and buff with a dry cloth.
3. DO NOT attempt to use any waxes or polishes as these may cause discoloration.

### Storing your Heater

1. Save the box for the off-season storage,
2. Clean the heater following the cleaning instructions on the previous page.
3. Remove the wheel base assemblies.
4. Place the heater and the wheel parts back into the original box and store in a cool and dry place.
5. If you wish to store the heater fully assembled, be sure to cover it to protect it from dust.

Model Code: 3680, 3681, 3682, 3853

Oypla.com LLP / www.oypla.com

Item	Symbol	Value	Unit	Item	Unit
<b>Heat output Model: 3681</b>				<b>Type of heat input, for electric storage local space heaters only (select one)</b>	
Nominal heat output	P <sub>nom</sub>	1.5	kW	manual heat charge control, with integrated thermostat	No
Minimum heat output (indicative)	P <sub>min</sub>	0.6	kW	manual heat charge control with room and/or outdoor temperature feedback	No
Maximum continuous heat output	P <sub>max,c</sub>	1.5	kW	electronic heat charge control with room and/or outdoor temperature feedback	No
<b>Heat output Model: 3680</b>				fan assisted heat output	
<b>Heat output Model: 3680</b>				No	
Nominal heat output	P <sub>nom</sub>	2.0	kW	<b>Type of heat output/room temperature control (select one)</b>	
Minimum heat output (indicative)	P <sub>min</sub>	0.8	kW	single stage heat output and no room temperature control	No
Maximum continuous heat output	P <sub>max,c</sub>	2.0	kW	Two or more manual stages, no room temperature control	No
<b>Heat output Model: 3682</b>				with mechanic thermostat room temperature control	
<b>Heat output Model: 3682</b>				Yes	
Nominal heat output	P <sub>nom</sub>	2.5	kW	with electronic room temperature control	No
Minimum heat output (indicative)	P <sub>min</sub>	1.0	kW	electronic room temperature control plus day timer	No
Maximum continuous heat output	P <sub>max,c</sub>	2.5	kW	electronic room temperature control plus week timer	No
<b>Auxiliary electricity consumption</b>				<b>Other control options (multiple selections possible)</b>	
At nominal heat output	e <sub>lmax</sub>	N/A	kW	room temperature control, with presence detection	No
At minimum heat output	e <sub>lmin</sub>	N/A	kW	room temperature control, with open window detection	No
In standby mode	e <sub>lSB</sub>	0	kW	with distance control option	No
				with adaptive start control	No
				with working time limitation	No
				with black bulb sensor	No
Contact details	OYPLA.COM LLP /UXBRIDGE, UB8 2FX				

Model Code: 3680, 3681, 3682, 3853

Oypla.com LLP / www.oypla.com

1 Front Cover

-

2 Safety/Warning

Instructions

-

4 Assembly

Instructions

-

5 Operating

Instructions

-

6 Cleaning

-

6 Storage

-

7 Technical

Specification

-

8 Back Cover

End

## HAVE A QUESTION ABOUT YOUR PURCHASE?

Our dedicated customer services team are happy to help. Contact them via:

**Telephone:** 020 3600 22 55  
**Email:** [cservice@oypla.com](mailto:cservice@oypla.com)  
**Live Chat:** [WWW.OYPLA.COM](http://WWW.OYPLA.COM)

## CONSIDER THE ENVIRONMENT!

In the United Kingdom, approximately 5 billion corrugated boxes are used per year, amounting to around 83 per person! By recycling the cardboard box in which this product was packed, you contribute to the preservation and sustainability of the environment.

If you see a recycling logo on the packaging of your product, such as the below examples, that piece of packaging is recyclable. If there is not a recycling logo, please check with your local authorities before recycling.



PLEASE RETAIN A COPY OF THESE INSTRUCTIONS FOR FUTURE CONSULTATION

# OYPLA.COM

AN OFFICIAL OYPLA BRANDED PRODUCT

## ENVIRONMENTAL PROTECTION

Products bearing the symbol shown below means that used electrical and electronic equipment (WEEE) should not be mixed with general household waste. For proper treatment, recovery and recycling, please take this product(s) to designated collection points where it will be accepted free of charge. Disposing of this product correctly will help save valuable resources and prevent any potential negative effects on human health and the environment, which could otherwise arise from inappropriate waste handling. Please contact your local authority for further details of your nearest designated collection point. Penalties may be applicable for incorrect disposal of this waste, in accordance with your national legislation.

Imported by Oypla.com LLP, Uxbridge, UB8 2FX



Model Code: 3680, 3681, 3682, 3853

Oypla.com LLP / [www.oypla.com](http://www.oypla.com)