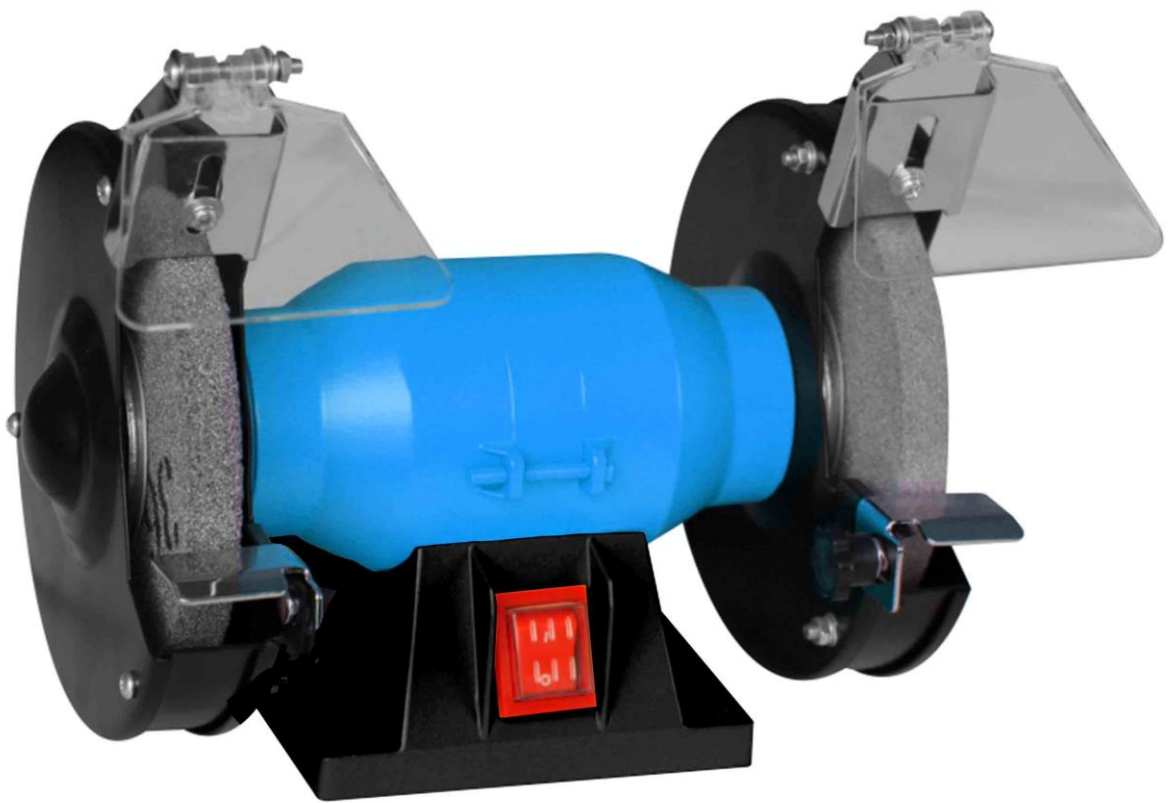


OYPLATM DIY



Bench Grinder

USER MANUAL Model No: 3604

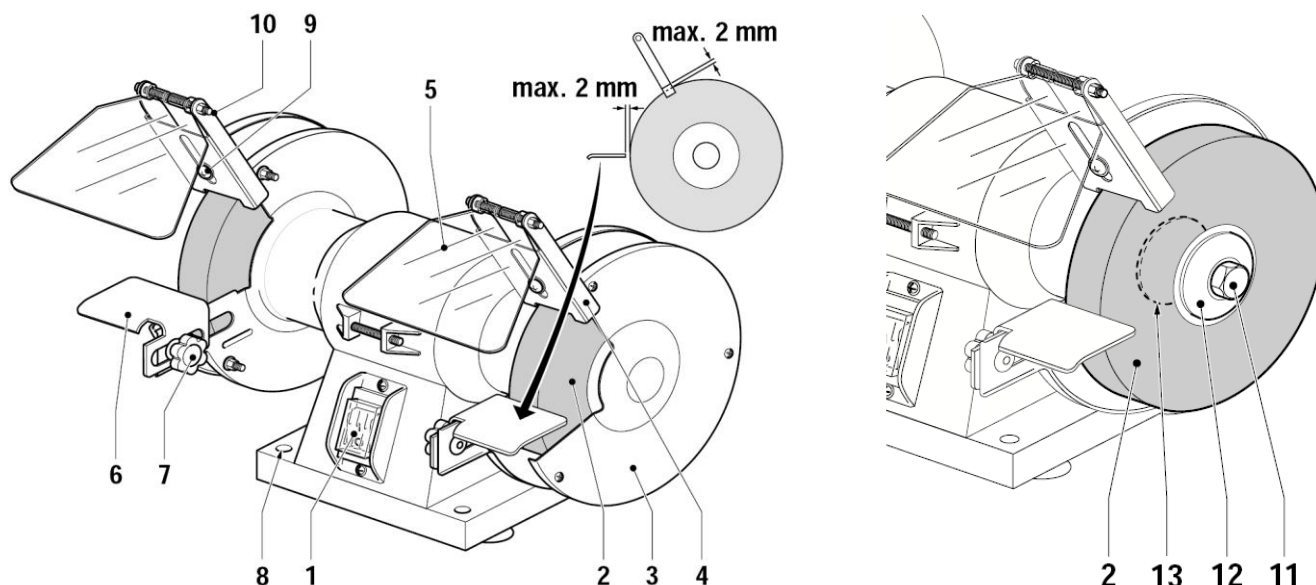
Safety Instructions

Notice: Ensure you read and fully understand instructions before use

While every attempt is made to ensure the highest degree of protection in all equipment, we cannot guarantee freedom from injury. The user assumes all risk of injury due to use. All merchandise is sold on this condition, which no representative of the company can waive or change.

- Never carry out any alterations or modifications to this product.
- This product is not a toy, and is only to be used for its designated purpose.
- This product is intended for indoor use only.
- The product should only be connected to a 240V AC 50Hz electrical outlet.
- Never leave the product unattended, even for a short while, always switch it off.
- Keep the product out of children's reach and do not allow children to use it.
- Never use near flammable materials or gasses.
- Inspect the mains lead regularly. Never use the product if the mains lead or plug has been damaged in any way.
- Do not place the mains lead on or near any hot surface.
- Do not touch the product if your hands are moist or wet.
- Wear protective goggles and gloves when operating.
- Never use grinding wheels of a different size or specification to those supplied.
- Never using the grinder if it has damaged, cracked or excessively worn grinding wheels.
- The grinder should always be securely mounted on a flat, clean surface.
- Always ensure that the safety guards are secured before use.
- The safety guards must be adjusted to be as close as possible to the grinding wheels before use.
- Always switch off and unplug the grinder before changing the grinding wheels.
- Ensure that the grinding wheels are securely fitted before use.
- Clean only with a damp cloth. Do not use strong industrial cleaning substances or abrasive materials as these will damage the product. Make sure the product is off, unplugged from the socket and been left for five minutes to remove the risk of electrical shock.
- If the product is damaged or has any defects, please contact cservice@oypla.com

Operating Instructions



- | | | | |
|-------------------|-----------------------|-------------------|------------------|
| 1. On/Off Switch | 5. Transparent Screen | 9. Mounting Screw | 13. Inner Flange |
| 2. Grinding Wheel | 6. Workplace Support | 10. Nut | |
| 3. Wheel Guard | 7. Adjusting Screw | 11. Spindle Nut | |
| 4. Spark Guard | 8. Mounting Hole | 12. Outer Flange | |

Mounting the Bench Grinder

The grinder always must be securely mounted to a workbench.

1. Mark the position of the mounting holes (8) on the workbench.
2. Drill holes at each of the marked positions, adjusting the diameter and depth of the holes and screws used.
3. Place the machine on the workbench and insert the screws into the mounting holes.
4. Firmly tighten the screws.

Replacing a Grinding Wheel

1. Remove the wheel guard (3).
2. Loosen the nut (11). The nut on the right spindle has a clockwise thread, the nut on the left spindle has an anticlockwise thread.
3. Remove the outer flange (12) and the old grinding wheel (2).
4. Clean the flanges (12 and 13).
5. Mount a new grinding wheel.
6. Place the outer flange against the grinding wheel and place the nut onto the spindle. Securely tighten the nut.
7. Replace the wheel guard.

WARNING: Always unplug the tool before replacing the grinding wheel. Never use a cracked wheel. Immediately replace a cracked grinding wheel to avoid damaging the product or causing injuries.

Mounting and Adjusting the Spark Guard

You must regularly adjust the spark guards in order to compensate the wear of the grinding wheels.

1. Mount the spark guard (4) to the wheel guard (3) using the screw (9).
2. Adjust the distance between the spark guard and the grinding wheel (2) to as close as possible, with a maximum of 2mm distance.
3. Tighten the spark guard screw.
4. Slide the screen (5) to the front.
5. Tighten the nut (10).

WARNING: The spark guard offers initial protection to your eyes and hands from sparks, however goggles and gloves should still be worn.

Adjusting the Workplace Supports

You must regularly adjust the workplace supports in order to compensate for the wear of the grinding wheels.

1. Loosen the adjusting screw (7).
2. Adjust the distance between the workplace support (6) and the grinding wheel (2) to as close as possible, with a maximum of 2mm distance.
3. Tighten the adjusting screw.

Operating Instructions

1. Before switching on the machine, check if all screws and nuts are tight and if the grinding wheel can rotate freely.
2. Always grind on the front part of the grinding wheel. Never over-pressure the machine, causing the grinding wheel to come to a halt.
3. The machine is not intended for permanent use. Make sure that the machine does not overheat. After using the machine for 30 minutes, let it cool down to ambient temperature.

Cleaning and Maintenance

WARNING: Before performing any work on the machine, switch off and unplug from the power source.

Cleaning

Regularly clean the machine housing with a soft cloth, preferably after each use. Keep the ventilation slots free from dust and dirt. If the dirt does not come off, use a soft cloth moistened with soapy water. Never use solvents such as petrol, alcohol, ammonia water etc. These solvents may cause damage to the plastic parts.

Lubrication

This machine requires no additional lubrication.

Technical Data

Rated Voltage: 240V AC, 50Hz

Power: 150W

No-Load Speed: 2950rpm

Grinding Wheel Max. Thickness: 12.7mm

Grinding Wheel Diameter: 150mm

Wheel Bore: 16mm

Weight: 4.8kg

Please retain a copy of all instructions for future consultation.



An Official Oypla Branded Product



Imported into the EU by Oypla.com LLP, Uxbridge, UB8 2FX

Environmental Protection

Products bearing the symbol shown above means that used electrical and electronic equipment (WEEE) should not be mixed with general household waste. For proper treatment, recovery and recycling, please take this product(s) to designated collection points where it will be accepted free of charge. Disposing of this product correctly will help save valuable resources and prevent any potential negative effects on human health and the environment, which could otherwise arise from inappropriate waste handling. Please contact your local authority for further details of your nearest designated collection point. Penalties may be applicable for incorrect disposal of this waste, in accordance with your national legislation.