

OYPLATM GARDEN



20 Litre Knapsack Sprayer

Safety Instructions

Notice: Ensure you read and fully understand instructions before use

While every attempt is made to ensure the highest degree of protection in all equipment, we cannot guarantee freedom from injury. The user assumes all risk of injury due to use. All merchandise is sold on this condition, which no representative of the company can waive or change.

- The sprayer is designed for the application of agricultural chemicals, disinfectants, cleaning agents etc. Do not spray caustic or corrosive solutions as these will damage the sprayer.
- Wash the inside of the spray tank with clean water after usage.
- Always wear the correct personal protective equipment whilst using, cleaning and servicing the sprayer.
- Lubricate the felt sealing washer at the top of the air chamber with light oil at regular intervals. This ensures smooth operation of the air pump and prevents leakage of spray liquid.
- Do not expose the sprayer to strong sunlight when storing as to prevent deterioration of the tank.
- Store the 20 Litre Knapsack Sprayer in a well ventilated area, out of the reach of children and animals.
- Always direct the spray downwind of the operator. Spraying into the wind will result in operator contamination.
- Do not smoke whilst using the sprayer.
- If the product is damaged or has any defects, please contact cservice@oypla.com

**DO NOT ATTEMPT TO FILL THE KNAPSACK SPRAYER
ABOVE THE 20 LITRE LIMIT.**



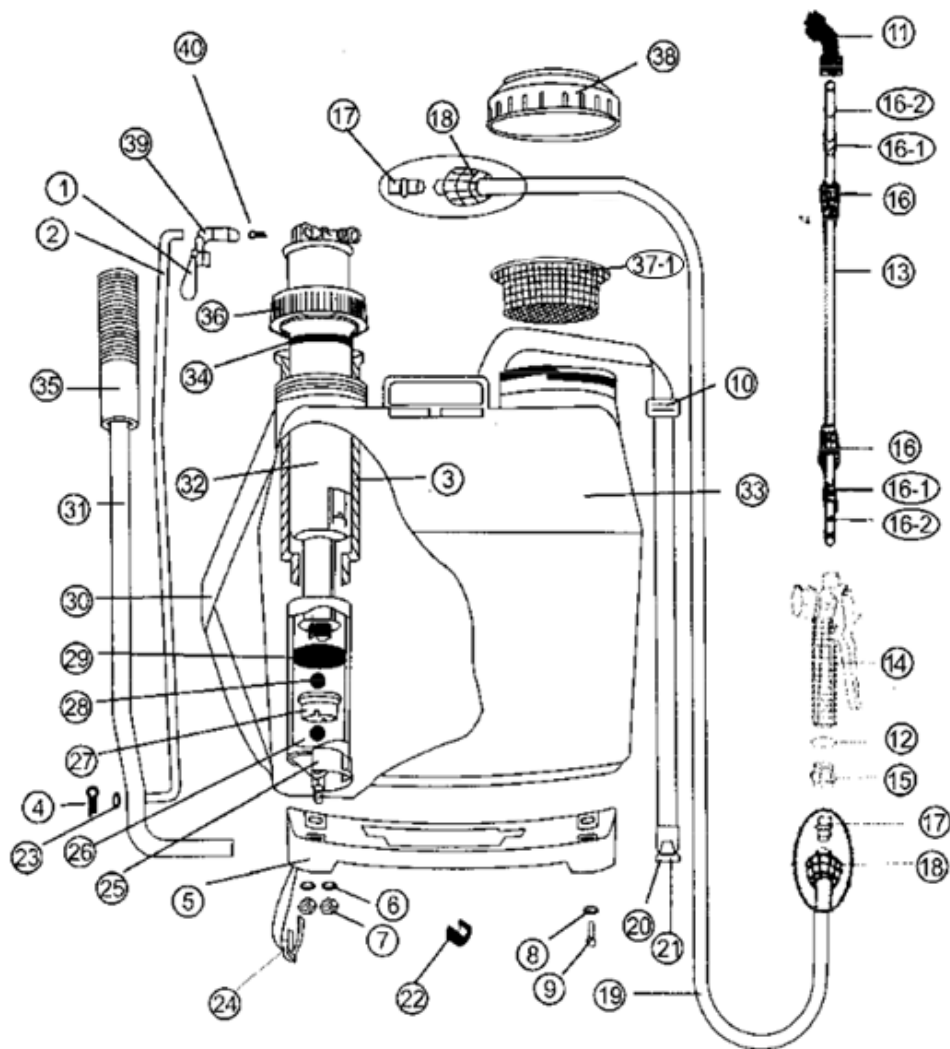
**ALWAYS WEAR
SUITABLE PROTECTION**

Operating Instructions

Parts List:

If you are missing any of the below parts please contact cservice@oypla.com

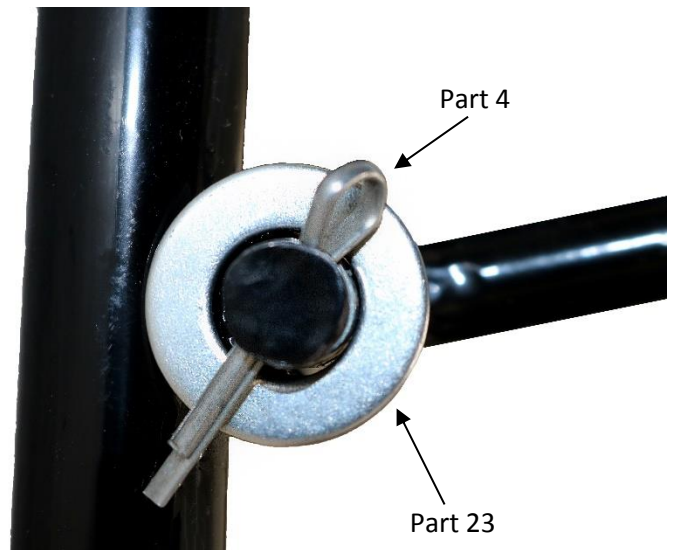
Please be aware that you will be referring to this parts list throughout the assembly process.



- | | | |
|-------------------------|---------------------------------|-----------------------------------|
| 1. Handle Securing Ring | 15. Adaptor | 28. Valve Ball |
| 2. Connecting Rod | 16-1. Locking Sleeve | 29. Cup Washer |
| 3. Guide Bushing | 16-2. O-ring | 30. Carrying Strap |
| 4. Split Pin | 17. Hose Barb | 31. Pump Handle |
| 5. Tank Base | 18. Hose Nut | 32. Air Chamber |
| 6. Washer | 19. Hose | 33. Pesticide Tank |
| 7. Nut | 20. Carrying Strap End Fitting | 34. Felt Sealing Washer |
| 8. Washer | 21. Carrying Strap Hook | 35. Pump Handle Grip |
| 9. Screw | 22. Pump Handle Attachment Clip | 36. Air Chamber Lid |
| 10. Strap Buckle | 23. Washer | 37. Pesticide Tank Filling Filter |
| 11. Nozzle Attachments | 24. Carrying Strap Attachment | 38. Pesticide Tank Lid |
| 12. Washer | 25. Pump | 39. Handle & Lance Retaining Clip |
| 13. Spray Lance | 26. Valve Ball | 40. Split Pin |
| 14. Trigger Valve | 27. Valve Seal | |



1. Insert the Pump Handle (part 31) into the hole in the base of the tank (part 5), securing the handle into place using the two Pump Handle Attachment Clips (part 22) provided. Once done, push the Pump Handle Grip (part 35) onto the top of the Pump Handle (part 31), ensuring it is secure. Please see the images above.



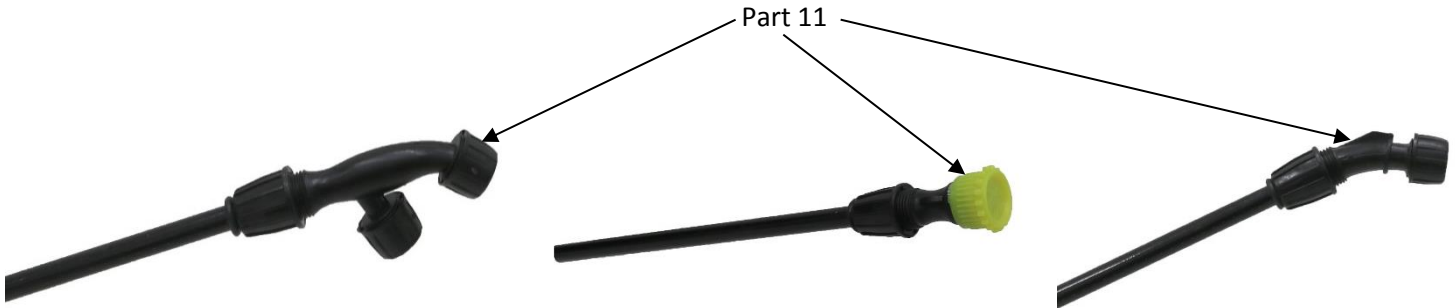
2. Fit the bent end of the Connecting Rod (part 2) into the hole in the Pump Handle (part 31). After this, secure the Connecting Rod (part 2) by placing a Washer (part 23) onto the end of the rod and securing it into place using a Split Pin (part 4). See the images above for more detail.

3. Attach one end of the Hose (part 19) to the fitting on the air chamber. Please ensure that the Hose Barb (part 17) is in the Hose Nut (part 18) before attaching the Hose (part 19), as without these parts the Hose (part 19) won't be able to be correctly secured into place.



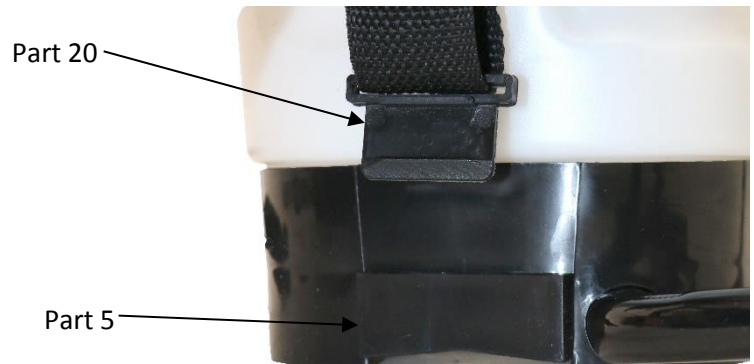
4. Attach the other end of the Hose (part 19) to the inlet fitting of the Trigger Valve (part 14). Please ensure that, just like in the previous step that the Hose Barb (part 17) is inside of the Hose Nut (part 18) as if it isn't then the Hose (part 19) will not be able to be secured correctly. See the image to the left.

5. Slide the Spray Lance (part 13) into the outlet of the Trigger Valve (part 14). In regards to securing the Spray Lance (part 13), please refer to the securing method in the previous steps.

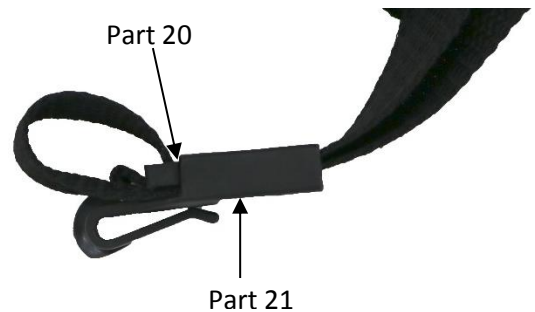


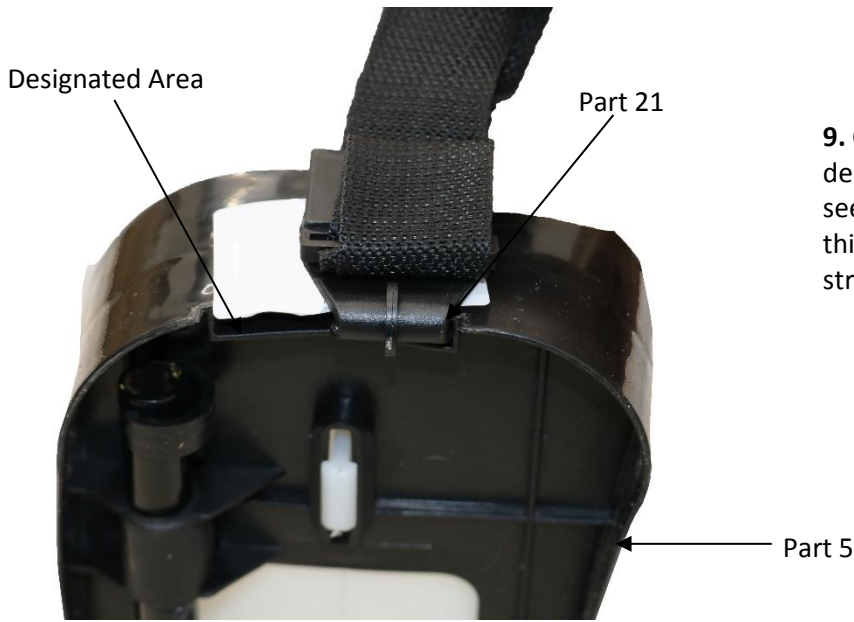
6. Once the Spray Lance (part 13) is correctly attached, attach one of the three Nozzle Attachments (part 11) depending on the attachment you need at the time. When changing the Nozzle Attachments (part 11), please ensure that they are secured correctly to avoid any spillage of fluids.

7. Before you use the 20 Litre Knapsack Sprayer you will be required to attach the carrying straps. Start by passing the Carrying Strap End Fitting (part 20) and the Carry Strap Hook (part 21) through the opening in the side of the Tank Base (part 5). See top image to the right.



8. After this, push the Carrying Strap End Fitting (part 20) through the Carry Strap Hook (part 21) as this will secure the carrying strap at the desired length. Repeat these steps on the other side to complete both carrying straps. Please see the bottom image to the right.





9. Clip the Carrying Strap Hook (part 21) onto the designated area on the Tank Base (part 5). Please see the image to the left for more detail. Repeat this step on the other side with the other harness strap.

10. To lengthen the harness push the Strap Buckle (part 10) up, however to decrease the length you should pull the Strap Buckle (part 10) towards you. When wearing the 20 Litre Knapsack Sprayer ensure that it isn't loose and dangling off of your back.



11. After completing all previous steps, put the Pesticide Tank Filling Filter (part 37) into the compartment under the Pesticide Tank Lid (part 38). This will make sure that nothing other than liquid will go into the Pesticide Tank (part 33)

Make sure to follow the instructions on the packaging of the agricultural chemicals, disinfectants, cleaning agents etc when pouring them into the 20 Litre Knapsack Sprayer as to avoid damaging the product and/or causing harm to yourself or those around you.



If you find one of the nozzles becomes blocked during use or doesn't spray in the nozzle's pattern, unscrew the nozzle tip and clean it under running water. Do not try to unblock the nozzle using an object as this may damage the nozzle, rendering it ineffective.

To operate the 20 Litre Knapsack Sprayer, unscrew the Pesticide Tank Lid (part 38) and fill it through the Pesticide Tank Filling Filter (part 37) before screwing the Pesticide Tank Lid (part 38) back on. Attach the 20 Litre Knapsack Sprayer to your back and pump the Pump Handle (part 31) to build the pressure in the Air Chamber (part 32) before spraying. Once you've finished using the 20 Litre Knapsack Sprayer, remove both the Pesticide Tank Lid (part 38) and the Pesticide Tank Filling Filter (part 37) and wash the Pesticide Tank (part 33) with warm water.



An Official Oypla Branded Product

**Please retain a copy of all instructions
for future consultation.**