

DIY

User Manual

Model Code: 3386

THANK YOU FOR YOUR ORDER

Contents

- 1 Front Cover
-
- 2 Safety
Instructions
-
- 4 Operating
Instructions
-
- 5 Cleaning and
Maintenance
-
- 6 Back Cover

End



Wallpaper Steamer

Safety Instructions

Notice: Ensure you read and fully understand instructions before use

While every attempt is made to ensure the highest degree of protection in all equipment, we cannot guarantee freedom from injury. The user assumes all risk of injury due to use. All merchandise is sold on this condition, which no representative of the company can waive or change.

1 Front Cover

-

2 Safety
Instructions

-

4 Operating
Instructions

-

5 Cleaning and
Maintenance

-

6 Back Cover

End

- Please ensure that you have read and understood all of the contents of this manual before using the wallpaper steamer.
- Never leave this appliance unattended whilst it is in operation and/or plugged in at the socket.
- Never use the appliance if it has been dropped, and/or has visible signs of damage, or if it is leaking.
- Never fill the appliance tank above the maximum line.
- Unplug your appliance when you are not using it, when filling with water or to perform maintenance.
- Ensure your workspace is clean and uncluttered.
- Always keep a stable position when using the appliance. Avoid overreaching.
- Ensure your workspace is suitably lit.
- Do not operate your appliance near explosive or flammable materials or in confined, badly ventilated and cramped space.
- Protect yourself against electric discharges. Avoid bodily contact with surfaces connected to the ground such as for example: piping, radiators, electric cookers, refrigerators.
- Do not let wallpaper wastes or other products accumulate on the applicator, in the hose, and on the safety valve orifice, as this could provoke a dangerous rise of pressure.
- This product is not a toy, and is only to be used for its designated purpose.
- Never carry out any alterations or modifications to this product.
- This product is not intended for use by persons (including children) with reduced physical, sensory, and mental capacities, or lack of experience and knowledge, unless they have been given supervision or instruction concerning use of the product by persons responsible for their safety.
- Liquid or steam must not be directed towards equipment containing electrical components, such as the interior of ovens.
- Always ensure the appliance is unplugged before cleaning or maintenance.
- Always keep this appliance out of the reach of children and pets, especially whilst in operation or cooling down.
- Use individual protection equipment if necessary (work gloves, shoes, goggles, respiratory filter, etc.) according to the work to be done. Wear appropriate work garments.
- Act by using common sense. Do not use the tool when you are tired, sick or under the influence of alcohol, medication or drugs.
- Store the appliance in a dry place, far from sources of heat or of dangerous vapours when it has completely cooled down (after at least 30 minutes).
- Avoid working with spectators around, especially children, if it could present risks, and do not leave tools within their reach during and after work.
- Do not try to open or dismantle your appliance to fix it yourself. If your appliance is damaged or faulty, please contact cservice@oypla.com
- This appliance does not need any special mechanical maintenance.
- Ensure the power supply to the socket into which the appliance is plugged, is in accordance with the rating label on the appliance and that the socket is earthed.
- Only use the handles provided to move the product when in use as product may be hot.
- When in use keep hands, face and body away from the hot steam.
- The product is only intended for domestic use and only in the manner described in this instruction manual.

Contents

1	Front Cover
-	-
2	Safety Instructions
-	-
4	Operating Instructions
-	-
5	Cleaning and Maintenance
-	-
6	Back Cover

End

- Do not place the mains lead on or near any hot surface.
- Do not touch the product if your hands are moist or wet.
- Do not attempt to unplug the product by pulling on the power cord.
- Only use this appliance on a flat, level, dry surface.
- Beware of hot drips from the applicator. Regularly clear the applicator of condensation, especially when removing wallpaper in high areas.
- Never stand on the hose.
- Do not drag or try to move the appliance by pulling the mains lead.
- Do not allow water or steam to enter light switches or power points.
- Use only standard tap water. Never add detergents or chemicals.
- Always store the appliance upright.
- The product is only intended for domestic use and only in the manner described in this instruction manual.
- Clean only with a damp cloth. Do not use strong industrial cleaning substances or abrasive materials as these will damage the product. Make sure the product is off, unplugged from the socket and been left for five minutes to remove the risk of electrical shock.
- Never remove filler cap or detach the hose whilst the unit is operating.
- Never block the safety valve.
- This product is intended for indoor use only.
- Switch off and wait at least 15 minutes before removing the filler cap to refill the tank.
- Allow the appliance to cool completely before emptying the tank.
- It is recommended that a RCD (residual current device) rated at 30mA is fitted into the mains supply socket for added protection against electric shock.

Check the state of your plaster before starting work. Steam can lessen weak, porous or poorly bonded plaster – which can also loosen readily if cracked, holed or if the steam plate is held in one position for too long after the paper is soaked. Weak plaster can normally be detached by tapping a few areas of wall. A hollow sound indicates that you should proceed only with extreme care – stopping immediately if you hear a cracking sound or plaster starts to break loose. The wallpaper stripper is safe for drywall/plaster board surfaces but whatever the material, it is always wise to check a small area before starting work properly.

Warnings

⚠ HOT STEAM! Danger of burns and/or scalding. Do not aim the applicator at yourself or any other persons or animals.

⚠ Use relevant PPE when required. Parts of this appliance may become hot whilst in use.

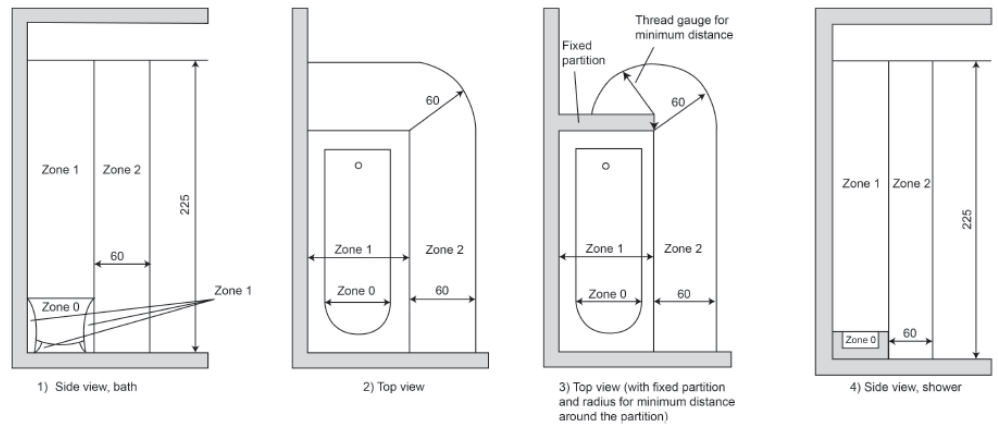
⚠ If the appliance is used in bathrooms, washrooms or any other damp rooms, please keep in mind that the IPX0 plug cannot be used in Zone 0 (IPX7, Zone 1 (IPX4) and Zone 2 (IPX4) according to HD 60364-7-701:2007, unless the plug and socket outlet are protected by an enclosure with at least IPX4 protection degree. Keep the plug at least 60cm away from water points and make sure that the plug can never fall into water.

Diagrams follow on the next page.

Contents

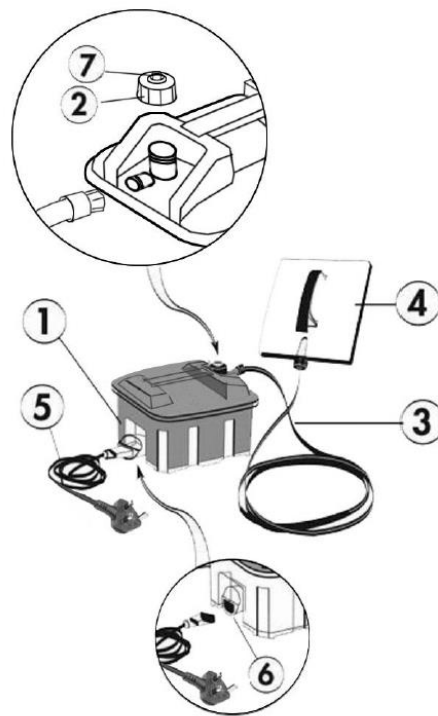
- 1 Front Cover
-
- 2 Safety Instructions
-
- 4 Operating Instructions
-
- 5 Cleaning and Maintenance
-
- 6 Back Cover

End



Operating Instructions

Please refer to the diagram below for instructions on how to operate your product.



1. Water Tank
2. Filler Cap
3. Hose
4. Applicator
5. Cable
6. Connector
7. Safety Valve

1. The appliance should be unplugged before filling or emptying the water tank. Remove the filler cap to fill the water tank. Ensure you never fill the tank above the maximum limit (4.5L).
2. Once the tank is filled, tighten the filler cap back onto the appliance. You can then plug it in using the connector and cable.
3. Allow the appliance 15-20 minutes for the water in the tank to heat up and for steam to be created. The appliance is now ready to begin steaming.

Contents

1	Front Cover
-	-
2	Safety Instructions
-	-
4	Operating Instructions
-	-
5	Cleaning and Maintenance
-	-
6	Back Cover

End

Remember to check a small area first.

Operation is simple for both right and left handed people. Simply hold the steam plate flat against the wallpaper for approx. 10 seconds. Now move the plate to the spot immediately next to the one just steamed – from which the paper should now easily come away with a little help from a wall scraper. Working this way should enable continuous paper removal although it may be necessary to steam for longer periods with some papers, or if not completely removed first time. Operate steamer until water level is low, then unplug unit and allow to cool for at least 15 minutes before removing filler cap – please beware of steam – and refilling unit. When finished, allow to cool completely and empty unit. Always store unit empty.

The appliance is ready to operate as soon as the steam (without pressure) comes out of the applicator. Make a small incision in the wallpaper. Move the applicator slowly over the wallpaper to impregnate it with steam; for efficient work, take the nature of the wallpaper and the condition of the wall into account. For thick wallpapers it may be necessary to wait before trying to peel off the wallpaper. Regularly check the water level (for example every 45 minutes).

Cleaning & Maintenance

Please refer to the instructions below in regards to cleaning and maintaining your product.

- To maintain optimum performance of the unit, particularly in areas of hard water, it may be necessary to descale the element in the unit. Proprietary kettle descaling products can be used in the unit – always follow the manufactures instructions properly.
- Always ensure that the appliance is stored upright, in a place away from any flammable liquids or gases.
- Ensure that the appliance is completely dry before storing.
- Always ensure that the appliance is unplugged and completely cool before emptying the tank, or performing any cleaning or maintenance.
- Only use a damp cloth whilst cleaning the outer shell. Never use any chemicals or cleaning substances, as they may damage the product.

Contents

- 1 Front Cover
-
- 2 Safety Instructions
-
- 4 Operating Instructions
-
- 5 Cleaning and Maintenance
-
- 6 Back Cover

End



HAVE A QUESTION ABOUT YOUR PURCHASE?

Our dedicated customer services team are happy to help. Contact them via:

Telephone: 020 3600 22 55
Email: cservice@oypla.com
Live Chat: WWW.OYPLA.COM

CONSIDER THE ENVIRONMENT!

In the United Kingdom, approximately 5 billion corrugated boxes are used per year, amounting to around 83 per person! By recycling the cardboard box in which this product was packed, you contribute to the preservation and sustainability of the environment.

If you see a recycling logo on the packaging of your product, such as the below examples, that piece of packaging is recyclable. If there is not a recycling logo, please check with your local authorities before recycling.



PLEASE RETAIN A COPY OF THESE INSTRUCTIONS FOR FUTURE CONSULTATION

OYPLA.COM

AN OFFICIAL OYPLA BRANDED PRODUCT

ENVIRONMENTAL PROTECTION

Products bearing the symbol shown below means that used electrical and electronic equipment (WEEE) should not be mixed with general household waste. For proper treatment, recovery and recycling, please take this product(s) to designated collection points where it will be accepted free of charge. Disposing of this product correctly will help save valuable resources and prevent any potential negative effects on human health and the environment, which could otherwise arise from inappropriate waste handling. Please contact your local authority for further details of your nearest designated collection point. Penalties may be applicable for incorrect disposal of this waste, in accordance with your national legislation.

