



2kW Free Standing Patio Heater

Safety Instructions

Notice: Ensure you read and fully understand instructions before use

While every attempt is made to ensure the highest degree of protection in all equipment, we cannot guarantee freedom from injury. The user assumes all risk of injury due to use. All merchandise is sold on this condition, which no representative of the company can waive or change.







- Make sure all bolts are secured before using. The user takes all responsibility for the construction and placement of the product.
- Make sure the quartz tube heater is out of the reach of children to avoid potential hazards and injuries.
- Do not use the heater near any objects that can be affected by heat such as furniture, curtains or other flammable objects.
- Do not use near water i.e., bath tubs, wash areas or swimming pools.
- Never leave the heater unattended.
- Once you are finished with the patio heater be sure to turn it off, leaving it on can be dangerous. Allow to cool before moving/storing.
- Do not cover the unit during operation or while it is hot.
- To protect against electrical shock, do not immerse cord, plug or any part of this appliance in water or any other liquid.
- The unit is for household use only. It is not safe to use on a building suite, greenhouse, barn or stable or other environment where there is flammable dust.
- This product is not to be used by children without supervision or guidance from a responsible adult.
- Ensure the power supply to the socket into which the appliance is plugged, is in accordance with the rating label on the appliance and that the socket is earthed.
- If the power supply cord is damaged, it must be replaced by a qualified electrician to avoid danger.
- Leaving the product outside exposed to weather, especially direct sun, rain and salt air, will speed the weathering process. This can be slowed by removing the product from these conditions, or covering it with a suitable cover.
- This product is not a toy, and is only to be used for its designated purpose.
- Do not carry out alterations or modifications to this product.
- This product is intended for outdoor use only.
- Clean only with a damp cloth. Do not use strong industrial cleaning substances. Never clean while hot or in use.
- If the product is damaged or has any defects, please contact cservice@oypla.com

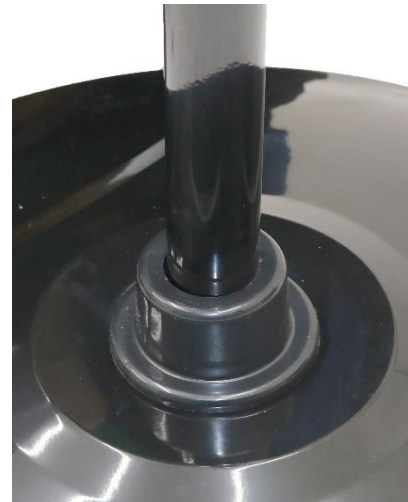
Operating Instructions

Parts List:

If you are missing any of the below parts please contact cservice@oypla.com

Please be aware that you will be referring to this parts list throughout the assembly process.

<div>Heater Enclosure</div> <div></div> <div>1pcs</div>	<div>Upper Support Pole</div> <div></div> <div>1pcs</div>	
<div>Middle Support Pole</div> <div></div> <div>1pcs</div>	<div>Support Screws</div> <div></div> <div>9pcs</div>	
<div>Lower Support Pole</div> <div></div> <div>1pcs</div>	<div>Base Pole Screws</div> <div></div> <div>4pcs</div>	
<div>Base</div> <div></div> <div>1pcs</div>	<div>Screw Cover</div> <div></div> <div>1pcs</div>	<div>Power Cord Fixture</div> <div></div> <div>3pcs</div>



1. Begin by unscrewing the base pole screws. Attach the lower support pole to the base using the base pole screws and tightening them until secure. After this, slide the screw cover over the lower support pole and push it down until it connects with the base. See images above.

2. Unscrew the support screws found at the top of the lower support pole. Slide a power cord fixture onto the lower support pole, securing this in place with the fixture screw and the nut that is pre-installed in the power cord fixture. Please see image to the right.



3. Once done, slide the middle support pole on to the lower support pole, ensuring that they are tightly connected. After this, secure both poles together using the support screws taken from the lower support pole. Do not overtighten. Please see image to the left.

4. Unscrew the support screws found at the top of middle support pole. After this, slide a power cord fixture on to the middle support pole, securing it in place with the fixture screw. Once done, push the upper support pole in to the middle support pole, ensuring that they are tightly connected. After this, secure both poles together using the support screws taken from the middle support pole. Do not overtighten. Please see the images below. Please see images below.



5. Loosen the height adjustment knob found at the top of the upper support pole. After this, slide a power cord fixture on to the height adjustment pole securing it in place with the fixture screw. Pull the height adjustment pole out from the upper support pole. Slide the power cord fixture onto the height adjustment pole. Please see the images below.



6. Attach the heater enclosure to the height adjustment pole by using the attachment screw that's found on the back of the heater enclosure. Please see the image to the right.



7. After completing all previous steps, push the power cord into the power cord fixtures that are on the support poles of the 2KW Quartz Free Standing Patio Heater. One done, turn the 2KW Quartz Free Standing Patio Heater on by pulling on the cord found on the back of the heater enclosure. It has four heat settings; 0 (off), 1 (650W, low), 2 (1350W, medium) and 3 (2000W, high).

HAVE A QUESTION ABOUT YOUR PURCHASE?

OUR DEDICATED CUSTOMER SERVICES TEAM ARE HAPPY TO HELP
CONTACT THEM VIA:

TELEPHONE: 020 3600 2255

EMAIL: cservice@oypla.com

LIVE CHAT: www.oypla.com

PLEASE RETAIN A COPY OF THESE INSTRUCTIONS FOR FUTURE CONSULTATION



Environmental Protection

OYPLA.COM

An Official OYPLA Branded Product



Products bearing the symbol shown below means that used electrical and electronic equipment (WEEE) should not be mixed with general household waste. For proper treatment, recovery and recycling, please take this product(s) to designated collection points where it will be accepted free of charge. Disposing of this product correctly will help save valuable resources and prevent any potential negative effects on human health and the environment, which could otherwise arise from inappropriate waste handling. Please contact your local authority for further details of your nearest designated collection point. Penalties may be applicable for incorrect disposal of this waste, in accordance with your national legislation.



Imported by Oypla.com LLP, Uxbridge, UB8 2FX

USER MANUAL Model No: 3115

IPX4