

**Out of this world savings.**

---

## **User Manual**

Model: **3073**

---



# **Lawn Aerator**

---

---

# Contents

Safety Information .....	2
What's In The Box?.....	3
Assembly Instructions.....	3

---

## Safety Information

### Please ensure you read and fully understand instructions before use

While every attempt is made to ensure the highest degree of protection in all equipment, we cannot guarantee freedom from injury. The user assumes all risk of injury due to use. All merchandise is sold on this condition, which no representative of the company can waive or change.

---

- This product is not a toy, and is only to be used for its designated purpose.
  - Never carry out any alterations or modifications to this product.
  - Unpacking, installing and fixing the parts are to be completed by an adult.
  - This product is intended for outdoor use only.
  - Makes sure the area in which you wish to use the lawn aerator has been cleared of objects before use.
  - This product is not intended for use by persons (including children) with reduced physical, sensory and mental capacities, or lack of experience and knowledge, unless they have been given supervision or instruction concerning use of the product by persons responsible for their safety.
  - **Warning! This product has lots of sharp spikes, and is not safe for use whilst children and pets are around.**
  - Leaving the product outside exposed to weather, especially direct sun, rain and salt air, will speed the weathering process. This can be slowed by removing the product from these conditions, or covering it with a suitable cover.
  - Clean only with a damp cloth. Do not use strong industrial cleaning substances or abrasive materials as these will damage the product. Be sure to clean the aerator spikes regularly to maintain the highest level of performance.
  - This product is not suitable for use by children.
  - This product has lots of very sharp points. Ensure safety gloves are worn when using the product to avoid personal injury.
  - If the product is damaged or has any defects, please contact [cservice@oypla.com](mailto:cservice@oypla.com).
  - **Warning! We recommend wearing appropriate PPE during use and whilst assembling it due to the spiky parts.**
-

## What's In The Box?

Please note that you will be referring to the below parts list during assembly

If any of the below parts are missing or damaged, please contact our dedicated team at [cservice@oypla.com](mailto:cservice@oypla.com).

<p><b>1. Handle Centre x1</b></p> 	<p><b>5. Washer x2</b></p> 
<p><b>2. Handle End x1</b></p> 	<p><b>6. Handle Lower x1</b></p> 
<p><b>3. Connector x2</b></p> 	<p><b>7. Bolt/Nut/Washer Set x2</b></p> 
<p><b>4. Locking Nut x2</b></p> 	<p><b>8. Aerator x1</b></p> 

## Assembly Instructions

Please refer to the below information to help assemble your Oypla product

If you require assistance with the assembly of your Oypla product, please contact our dedicated team at [cservice@oypla.com](mailto:cservice@oypla.com).

Firstly, unpack all of the contents from the packaging. Check that you have all of the parts required, as listed above.

1. The first thing to do is to connect the **Connectors** to the **Aerator**. Do this using a **Locking Nut** and **Washer** to secure each **Connector**. They should marry up centrally with enough room for the **Handle** to fit in between.

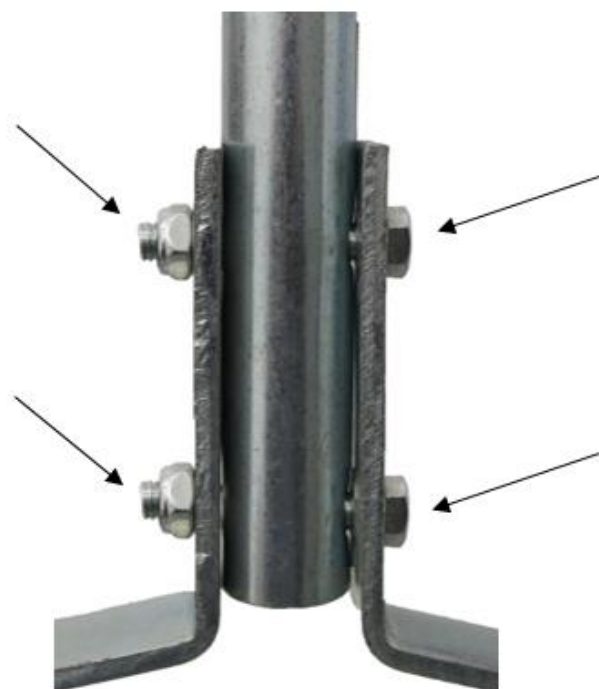
*Continues on next page*



2. To assemble the handle, push the **Handle End** and the **Handle Lower** onto either side of the **Handle Centre**. Be sure that they lock into place using the pressure buttons.



3. To attach the handle to the aerator section, align the holes found on the **Handle Lower** with the holes found in the top of the **Connectors**. Push a **Bolt** through each hole, securing with a **Washer** and **Nut**.





---

## Have a Question About Your Purchase?

Our dedicated customer services team are happy to help. Contact them via:

Telephone: 020 3600 22 55  
Email: [cservice@oypla.com](mailto:cservice@oypla.com)  
Live Chat: [www.oypla.com](http://www.oypla.com)

---

## Consider the Environment!

By recycling the cardboard box in which this product was packed, you contribute towards helping the environment. If you see a recycling logo such as the below on the packaging, it can be recycled. If a recycling logo is not present, please check with your local authority before recycling.



---

**PLEASE RETAIN A COPY OF THESE INSTRUCTIONS FOR FUTURE CONSULTATION**

An Official Oypla Branded Product  
Imported by Oypla.com LLP, Uxbridge, UB8 2FX

**User Manual**  
Model Code: 3073  
[Oypla.com](http://Oypla.com) LLP / [cservice@oypla.com](mailto:cservice@oypla.com)